

**Comparison of Representation in Welligent and the LAUSD Student
Information System for Students with Disabilities
(Data as of June, 2006)**

Pete Goldschmidt

This year, the Welligent database includes a greater number of students with disabilities (SWD) than does the Student Information System (SIS) database¹. Overall, there appears to be no appreciable difference between the two data sources, indicating that the Welligent system adequately represents the SWD population in LAUSD. Table 1 presents the number of overall cases in Welligent and SIS.

Table 1. Total number of students by database

		In Welligent		
		No	Yes	Total
In SIS	No		9,143	9,143
	Yes	4,015	73,727	77,742
	Total	4,015	82,870	86,885

The total number of SWD in the Welligent system is 82,870 while the total number of SWD in the SIS system is 77,742. The total number of students in the Welligent and SIS systems combined is 86,885. Out of this total, 73,727 (or 85%) of SWD are in both databases, 4,015 are in the SIS but not the Welligent, and 9,143 are in the Welligent but not in the SIS database.

The available data allows for comparisons on several student characteristics in order to determine whether there are systematic differences between students in Welligent and students in the SIS database; and students not in Welligent, but in the SIS database.

Table 2 displays the number of students by disability category and the corresponding percentage representation.

¹ This is based on analysis of the SIS and Welligent databases provided by the Office of the Independent Monitor. Cases coming from "NPS" and "Non Connected" sources are not included.

Table 2. Total number of students by database and disability category²

Category	SIS		Welligent		Not in Welligent	
	N	%	N	%	N	%
AUT	5,563	7.2	6,397	7.7	129	3.3
VI\BL	368	0.5	280	0.3	94	2.4
DBL	1,718	2.2	1,906	2.3	39	1.0
DD\MR	6,442	8.3	7,034	8.5	223	5.8
DI	1,315	1.7	3,134	3.8	125	3.2
EMD\OHI	4,528	5.8	4,890	5.9	189	4.9
HOH\DEAF	1,301	1.7	1,151	1.4	230	5.9
SLD	44,467	57.3	46,153	55.7	1,989	51.3
SLI	10,897	14.0	10,853	13.1	794	20.5
TBI\OI	980	1.3	1,002	1.2	62	1.6
OTHER	21	0.0	16	0.0	5	0.1
Total Valid	77,600	100.0	82,816	100.0	3,879	100.0
System Missing	9,285		4,069		136	
Total Merged	86,885		86,885		4,015	

The majority of SWD are in the Specific Learning Disability (SLD) category. When comparing the proportion of students in each disability category by database, we observed that students with Developmental Impairment (DI) were slightly over-represented in the Welligent system as compared to the SIS system (3.8% vs. 1.7% or a ratio of 2.4 in the Welligent and SIS respectively). SLD students were somewhat under represented in the Welligent data (55.7% vs. 57.3%, ratio was 0.97). Even though the discrepancies between SIS and Welligent were not insignificant in an absolute sense, in general both databases showed very similar proportions by disability category. However, it is still important to consider whether the differences were substantively important or not. Figure 1 summarizes results of Table 2 graphically.

² Tables displaying information about SWD and other student characteristics will have “system missing” students and total Ns may differ because students may be missing information on a particular characteristic (e.g. disability category, or language status etc). Further, if different students are missing data on disability category and another characteristic (e.g. language status) then this further reduces the total N in the table.

Figure 1. Percentage of students by database and disability category

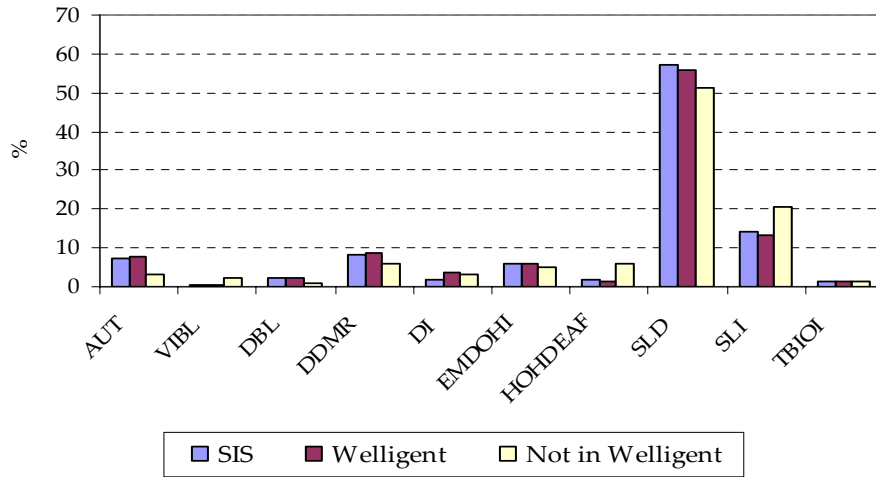


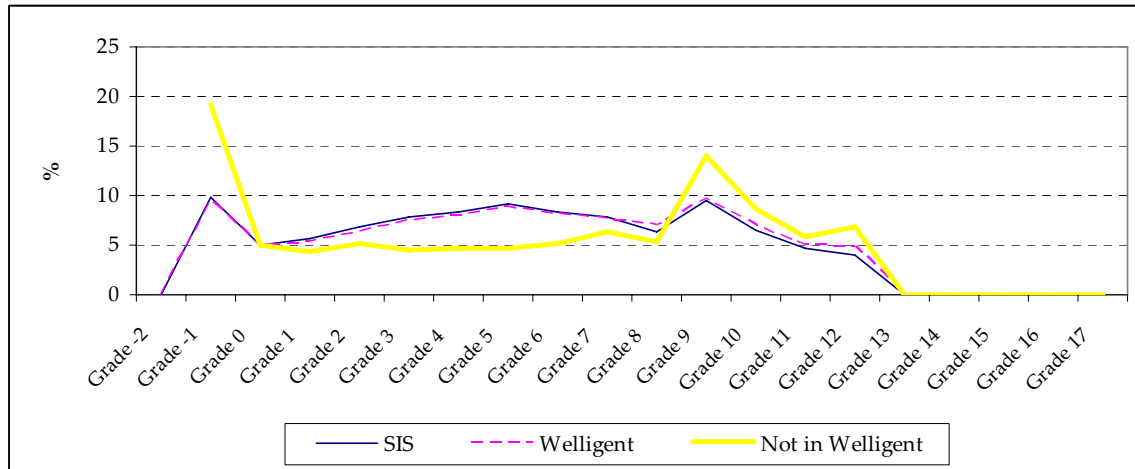
Table 3 presents results by grade level. On the whole, the Welligent and SIS databases present very similar distributions of SWD by grade level.

Table 3. Total number of students by database and grade level

Grade	SIS		Welligent		Not in Welligent	
	N	%	N	%	N	%
-2		0.0	3	0.0		
-1	7,665	9.9	7,933	9.6	770	19.2
0	3,925	5.0	3,956	4.8	204	5.1
1	4,429	5.7	4,427	5.3	177	4.4
2	5,286	6.8	5,302	6.4	210	5.2
3	6,130	7.9	6,237	7.5	182	4.5
4	6,533	8.4	6,627	8.0	189	4.7
5	7,088	9.1	7,370	8.9	185	4.6
6	6,511	8.4	6,825	8.2	205	5.1
7	6,054	7.8	6,368	7.7	253	6.3
8	4,939	6.4	5,831	7.0	215	5.4
9	7,391	9.5	8,080	9.8	564	14.1
10	5,052	6.5	5,753	6.9	351	8.7
11	3,572	4.6	4,085	4.9	236	5.9
12	3,167	4.1	4,024	4.9	274	6.8
13		0.0	28	0.0		
16		0.0	2	0.0		
17		0.0	1	0.0		
Total Valid	77,742	100.0	82,852	100.0	4,015	100.0
System Missing	9,143		4,033		0	
Total Merged	86,885		86,885		4015	

Figure 2 graphically presents the results from Table 3 and demonstrates more clearly how similar the proportion of students for each level are in the SIS and Welligent systems. In addition, it illustrates where the differences between Welligent and Not-in-Welligent are most pronounced. In Figure 2, Grade 0 refers to Kindergarten, while Grades -1 and -2 refer to pre-Kindergarten.

Figure 2. Percentage of students by database and grade level



Tables 4 and 5 present the results by gender and language status. There appears to be no significant differences by gender or language status.

Table 4. Total number of students by database and gender

Gender	SIS		Welligent		Not in Welligent	
	N	%	N	%	N	%
Girl	25,972	33.4	27,391	33.1	1,371	34.2
Boy	51,770	66.6	55,479	67.0	2,644	65.9
Total Valid	77,742	100.0	82,870	100.0	4,015	100.0
System Missing	9,143		4,015		0	
Total Merged	86,885		86,885		4,015	

Table 5. Total number of students by database and language status

Language Status	SIS		Welligent		Not in Welligent	
	N	%	N	%	N	%
EO	30,666	40.24	28,692	39.59	1,974	52.96
FEP	5,790	7.6	5,518	7.61	272	7.3
LEP	39,753	52.16	38,272	52.8	1,481	39.74
Total Valid	76,209	100	72,482	100	3,727	100
System Missing	0		3,727		288	
Total Merged	76,209		76,209		4015	

Table 6 presents results by race/ethnicity. Overall, the proportions are very similar in the SIS and Welligent databases. There are two minor differences. First, Hispanics represent about 1.6% fewer cases in the Welligent system than in the SIS system and second, Whites represent about 1% more pupils in the Welligent than in the SIS database. Again the ratios are 1.03 for Hispanics and 1.19 for Whites. This indicates that Whites are slightly over-represented in the Welligent system.

Table 6. Total number of students by database and race/ethnicity

	SIS		Welligent		Not in Welligent	
	N	%	N	%	N	%
African American	12,370	15.9	13,387	16.3	968	24.2
Hispanic	54,743	70.4	56,622	68.8	2,519	62.9
White	7,871	10.1	9,334	11.4	423	10.6
Other	2,751	3.5	2,922	3.6	98	2.5
Total Valid	77,735	100.0	82,265	100.0	4,008	100.0
System Missing	9,150		4,620		7	
Total Merged	86,885		86,885		4015	

Table 7 summarizes the results by local district. The results indicate that by district the range of SWD not in Welligent as a percentage of SWD enrollments varies from 2.6% (District 1) to 6.4% (District 7). There appears to be an inverse relationship between the percentage of SWD not in Welligent and total SWD enrollment (i.e. Districts with more SWD have fewer not-in-Welligent SWD).

Table 7. Not-in-Welligent by Local District

Local District	N Not in Welligent	SWD	% Missing
1	356	13,855	2.6%
2	483	11,213	4.3%
3	543	10,799	5.0%
4	359	9,516	3.8%
5	389	9,817	4.0%
6	202	6,294	3.2%
7	481	7,524	6.4%
8	416	9,401	4.4%
Total Valid	3,229	78,419	4.1%
System Missing	786	3,543	

Finally, Tables 8 and 9 list schools by percent not in Welligent (Table 8) and by absolute number not in Welligent (Table 9).

Table 8. Not-in-Welligent by highest percent missing

School Name	Total Enrollment	N not in Welligent	SWD	PCT Missing
AMESTOY TRILNGUAL MG	99	1	1	100%
BALDWIN HLS G/HA MAG	167	1	1	100%
HILLCREST CES/MUS MG	141	1	1	100%
SAN JOSE HG MAG	69	1	1	100%
SO GATE MTH/SCI MAG	114	1	1	100%
VIEW PARK PREP CHTR	249	2	2	100%
ACCELERATED CHARTER	679	11	14	79%
YOUNG HS	71	2	3	67%
VAUGHN NEXT CENT LC	1451	54	89	61%
JORDAN MATH/SCI MAG	218	1	2	50%
PATTON HS	66	1	2	50%
CDS AGGELER	102	17	37	46%
ELLINGTON HS	112	9	20	45%
PACOIMA ELEMENTARY	1438	36	84	43%
SECONDARY CDS	193	17	41	41%
ARCO IRIS PRIMRY CTR	197	2	5	40%
CITY OF ANGELS	2125	14	35	40%
EVERGREEN HS	81	4	11	36%
ADDAMS HS	84	1	3	33%
BRYSON EL M/S/T	138	1	3	33%
BURROUGHS G/HA MAG	460	2	6	33%
NHHS/LA ZOO BIOL MAG	293	2	6	33%
NO HOLLYWOOD HG MAG	318	1	3	33%
PORTER G/HA MAG	460	1	3	33%
MONROE POLICE ACD MG	147	3	10	30%
PHOENIX HS	58	2	7	29%
EAST VALLEY NEW CONT HS #1	0	3	11	27%
ROGERS HS	91	4	15	27%
ANGEL'S GATE HS	59	1	4	25%
BANNING CIP MAG	316	1	4	25%
CDS JOHNSON	124	5	20	25%
MIDDLE COLLEGE HS	357	1	4	25%
MONTEREY HS	75	1	4	25%
CDS WEST HOLLYWOOD	70	5	21	24%
SAN PEDRO POL ACD MG	118	2	9	22%
CDS TRI-C	163	9	43	21%
CENTRAL HS	602	14	67	21%
RILEY HS-CYESIS	126	5	24	21%
ACCELERATED ELEM	59	1	5	20%
MISSION HS	64	3	16	19%
WRIGHT M/S AERO MAG	401	5	27	19%
ACAD SEMILLAS PUEBLO	263	2	11	18%
COLLEGE-READY ACD HS	210	2	11	18%
EARHART HS	118	2	11	18%
INF/PRESCHOOL PGM		635	3543	18%
GRANT COMM MAG	388	3	18	17%
MARVIN DUAL LANG MAG	163	1	6	17%
RESEDA POLICE ACD MG	160	1	6	17%
SAN PEDRO MAR/M/S MG	352	1	6	17%

School Name	Total Enrollment	N not in Welligent	SWD	PCT Missing
VIEW PARK CONTN HS	84	1	6	17%
YTH OPP UNLTD ALT HS	348	4	24	17%
MANUAL ARTS SH	3802	68	437	16%
59TH ST EL	447	13	84	15%
BRIGHT EL	893	10	65	15%
FAIRFAX SH	2773	48	313	15%
BARRETT EL	1256	12	79	15%
MANHATTAN EL	639	14	94	15%
CURTISS MATH/SCI MAG	366	2	14	14%
FAIRFAX VIS ARTS MAG	358	2	14	14%
ROWAN EL	1353	19	136	14%
WASHINGTON PREP SH	2300	47	338	14%
9TH ST EL	484	4	29	14%
RIORDAN PC	331	3	22	14%
WRIGHT MS	904	16	123	13%
VERDUGO HLS MEDIA MG	179	1	8	13%
116TH ST EL	486	5	41	12%
KENNEDY HS ARCH/DIGT	360	2	17	12%
JORDAN SH	2466	35	310	11%
MC KINLEY EL	1034	8	71	11%
CANFIELD EL	374	9	80	11%
ELIZABETH LC	2613	28	249	11%
LOS ANGELES SH	4640	59	527	11%
NAPA EL	770	6	54	11%
PACOIMA TV/TH/FA MAG	268	1	9	11%
VALERIO NEW PC	249	4	36	11%
LA SALLE EL	1041	10	92	11%
CARSON SH	3662	32	295	11%
CARVER MS	2854	27	251	11%
61ST ST EL	971	8	75	11%
AUDUBON MS	1744	29	280	10%
WARNER EL	678	4	39	10%
LOCKE SH	3410	40	398	10%
RITTER EL	425	3	30	10%
SAN ANTONIO HS	89	2	20	10%
52ND ST EL	1074	9	91	10%
FLOURNOY EL	737	6	61	10%
FENTON AVE SCHOOL	1408	12	123	10%
WILSON SH	2629	42	436	10%
MANN MS	1614	24	255	9%
75TH ST EL	1697	11	120	9%
ANGELES MESA EL	670	7	77	9%
BRADLEY ENV/HUMAN MG	632	5	55	9%
CABRILLO EL	581	4	44	9%
LANAI EL	507	6	66	9%
SOLANO EL	270	1	11	9%
VERDUGO HILLS SH	2226	19	212	9%
EUCLID EL	799	5	56	9%
LORENA EL	831	5	56	9%
HYDE PARK EL	950	8	92	9%
WIDNEY HS	259	22	254	9%

School Name	Total Enrollment	N not in Welligent	SWD	PCT Missing
HILLCREST DR EL	1097	9	104	9%
DEL AMO EL	514	3	35	9%
MC ALISTER HS-CYESIS	199	3	35	9%
POINT FERMIN EL	329	3	35	9%
GOMPERS MS	2068	20	235	9%
HAZELTINE EL	1216	8	95	8%
95TH ST EL	1299	9	107	8%
EL CAMINO REAL SH	4033	20	238	8%
GRAPE EL	804	4	48	8%
HOLLYWOOD PER ART MG	379	2	24	8%
LAFAYETTE PARK PC	271	3	36	8%
MULTICULT LRN CTR	223	1	12	8%
PLAYA DEL REY EL	244	2	24	8%
RUSSELL EL	1352	6	72	8%
SATICOY EL	734	7	86	8%
CIENEGA EL	930	5	62	8%
AVALON GARDENS EL	257	2	25	8%
BROAD AVE EL	1128	10	125	8%
DOWNTWN BUSINESS MAG	670	2	25	8%
TOPANGA EL	300	2	25	8%
GARDENA SH	3278	27	338	8%
GRANT SH	2813	26	326	8%
INDEPENDENCE EL	863	8	101	8%
ESPERANZA EL	1047	9	114	8%
UNIVERSITY SH	2419	21	267	8%
KING JR EL	1066	7	90	8%
MONROE LAW/GOV MAG	385	1	13	8%
RAMONA HS	133	1	13	8%
FOSHAY LC	3503	33	432	8%
MUIR MS	2295	21	275	8%
KESTER EL	649	6	79	8%
GLENWOOD EL	642	5	66	8%
GRIFFITH JOYNER EL	1065	5	66	8%
FREMONT SH	4839	40	529	8%
WOODCREST EL	1371	7	93	8%
LEONIS HS	119	3	40	8%
WESTCHESTER SH	2369	15	202	7%
BROADACRES EL	462	4	54	7%
RIVERSIDE EL	672	8	108	7%
HOLLYWOOD SH	2803	26	355	7%
CRENSHAW SH	2635	29	405	7%
HAMILTON MUS ACAD MG	916	3	42	7%
LORNE MATH/SCI MAG	314	1	14	7%
TRINITY EL	1341	6	84	7%
DORSEY SH	1635	22	309	7%
MARSHALL SH	4475	29	409	7%
JEFFERSON SH	3834	35	497	7%
PEARY MS	2272	15	213	7%
HUMPHREYS EL	779	6	87	7%
96TH ST EL	1019	5	73	7%
HARTE PREP MS	1742	14	205	7%

School Name	Total Enrollment	N not in Welligent	SWD	PCT Missing
AMBLER EL	489	3	44	7%
CAROLDALE LRNG COMM	1106	6	88	7%
ERWIN EL	1059	9	132	7%
LIBERTY EL	1303	6	88	7%
WINDSOR M/S AERO MAG	747	3	44	7%
153RD ST EL	625	6	89	7%
CAMINO NUEVO CHTR AC	510	2	30	7%
CIMARRON EL	455	4	60	7%
HUNTINGTON DR EL	637	6	91	7%
COWAN EL	483	5	76	7%
VAN NUYS SH	2373	18	276	7%
SYLMAR SH	3295	27	415	7%
BURROUGHS MS	1822	11	170	6%
GRATTS EL	959	5	78	6%
PARK AVE EL	735	6	94	6%
WEIGAND EL	506	3	47	6%
LOS ANGELES ACAD MS	2964	20	314	6%
DOLORES EL	779	4	64	6%
HIGHLAND PARK HS	82	1	16	6%
LAUREL EL	446	3	48	6%
NO HOLLYWOOD SH	3935	24	384	6%
ROSEWOOD EL	561	5	80	6%
HAMILTON SH-COMPLEX	2030	20	322	6%
FRANKLIN SH	3114	22	359	6%
LOS ANGELES EL	1054	6	98	6%
PARMELEE EL	1426	6	99	6%
135TH ST EL	958	5	83	6%
TAFT SH	3597	16	266	6%
CRESCENT HTS EL	387	3	50	6%
SAN PASCUAL EL	353	3	50	6%
ROOSEVELT SH	4639	31	517	6%
MONROE SH	4227	34	568	6%
118TH ST EL	792	3	51	6%
AMESTOY EL	793	3	51	6%
VAN NUYS PER ARTS MG	440	1	17	6%
CENTURY PK EL	762	5	86	6%
MOUNT VERNON MS	1879	15	258	6%
BRIDGE EL	409	3	52	6%
BELL #3 SPAN SCHOOL	1805	10	174	6%
20TH ST EL	860	5	88	6%
MAYALL EL	465	5	88	6%
SATURN EL	621	5	88	6%
GARDENA EL	816	3	53	6%
PURCHE EL	619	3	53	6%
BANCROFT PER ART MAG	468	1	18	6%
BONITA EL	702	2	36	6%
DOUGLAS HS		1	18	6%
FULLBRIGHT EL	608	3	54	6%
MARINA DEL REY PA MG	269	1	18	6%
FORD BLVD EL	1381	7	127	6%
TULSA EL	583	4	73	5%

School Name	Total Enrollment	N not in Welligent	SWD	PCT Missing
ANN EL	221	2	37	5%
BEETHOVEN EL	361	4	74	5%
BRENTWOOD SCI MAG	1178	4	74	5%
KENNEDY SH	3012	18	335	5%
6TH AVE EL	964	7	132	5%
CLAY MS	1948	16	302	5%
BIRMINGHAM JOURN MAG	498	1	19	5%
OPEN CHARTER MAGNET	364	2	38	5%
OSCEOLA EL	448	3	57	5%
OLIVE VISTA MS	1882	10	196	5%
JEFFERSON NEW PC #6	202	1	20	5%
LAUSD/USC MTH/SC MAG	268	1	20	5%
SAN ANTONIO ELEM	749	4	81	5%
WILSHIRE CREST EL	650	7	142	5%
EL SERENO MS	2300	14	285	5%
MONLUX EL	624	5	102	5%
ALBION EL	491	2	41	5%
SAN PEDRO EL	809	5	104	5%
EMERSON MS	1548	8	167	5%
JOHN WOODEN HS	69	1	21	5%
TOWNE EL	415	2	42	5%
POLYTECHNIC SH	4133	24	505	5%
WEST VERNON EL	1419	4	85	5%
LORETO EL	656	3	64	5%
NUEVA VISTA EL	1213	5	107	5%
COLDWATER CYN EL	1231	4	86	5%
GARDEN GROVE EL	474	2	43	5%
LELAND EL	644	4	86	5%
IRVING MS	1805	12	262	5%
CHATSWORTH SH	3099	14	306	5%
FISHBURN EL	1086	6	132	5%
GULF EL		6	132	5%
VENICE SH	2671	15	330	5%
NORMANDIE EL	1185	9	199	5%
ARAGON EL	686	4	89	4%
MILLER EL	1205	4	90	4%
LINCOLN SH	2820	15	338	4%
NARBONNE SH	3171	17	385	4%
DENKER EL	893	3	68	4%
STERRY EL	358	3	68	4%
HUNTINGTON PARK SH	4573	16	363	4%
WEST ATHENS EL	1079	5	114	4%
CLOVER EL	534	2	46	4%
COLISEUM EL	384	3	69	4%
HENRY MS		8	184	4%
INDEPENDENCE HS	97	1	23	4%
INTERNATIONAL ST LC	335	1	23	4%
ROSCOMARE EL	518	2	46	4%
WESTWOOD EL	750	4	92	4%
WSTCHSTR M/S AER MAG	356	1	23	4%
GRIFFITH MS	1989	11	254	4%

School Name	Total Enrollment	N not in Welligent	SWD	PCT Missing
SAN FERNANDO SH	4152	17	395	4%
SELMA EL	587	3	70	4%
92ND ST EL	970	2	47	4%
ANNANDALE EL	345	2	47	4%
FLETCHER DR EL	891	4	94	4%
NIMITZ MS	3593	17	401	4%
MANCHESTER EL	1486	5	118	4%
MILES EL	2552	8	189	4%
MENLO EL	1278	4	96	4%
NOBEL MATH/SCI MAG	.	1	24	4%
QUEEN ANNE EL	505	2	48	4%
RAYMOND AVE EL	726	3	72	4%
SHERMAN OAKS EL	932	3	72	4%
LIGGETT EL	1225	6	145	4%
ANDASOL EL	.	3	73	4%
PALMS EL	517	2	49	4%
CORONA EL	1851	9	221	4%
66TH ST EL	1410	3	74	4%
CURTISS MS	1073	5	124	4%
ALDAMA EL	770	2	50	4%
HUBBARD EL	1023	3	75	4%
NOBLE EL	1861	5	125	4%
WESTPORT HTS EL	497	2	50	4%
PARKMAN MS	1266	6	153	4%
GLASELL PARK EL	792	4	103	4%
SHENANDOAH EL	799	4	103	4%
DODSON MS	1417	6	155	4%
SAN PEDRO SH	3106	15	389	4%
PALMS MS	1477	7	183	4%
HARRISON EL	1153	5	131	4%
32ND/USC PER ART MAG	734	2	53	4%
CHEREMOYA EL	436	2	53	4%
MONTAGUE ST SCHOOL	1125	2	53	4%
28TH ST EL	1864	4	107	4%
LAWRENCE MS	1754	9	241	4%
42ND ST EL	643	2	54	4%
ALEXANDER SCI CTR SC	669	1	27	4%
DYER EL	1077	4	108	4%
JUSTICE EL	471	3	81	4%
LATONA EL	439	1	27	4%
LEAPWOOD EL	428	2	54	4%
EDISON MS	2562	10	271	4%
APPERSON EL	.	2	55	4%
COLUMBUS AVE EL	677	2	55	4%
GRAND VIEW EL	769	2	55	4%
MILLER HS	202	7	193	4%
CAHUENGA EL	1349	3	83	4%
VICTORIA EL	1512	4	111	4%
DENA EL	951	3	84	4%
TOLAND WAY EL	574	2	56	4%
SAN FERNANDO EL	829	4	113	4%

School Name	Total Enrollment	N not in Welligent	SWD	PCT Missing
EL DORADO EL	714	3	85	4%
NEWCASTLE EL	469	3	85	4%
SOUTH PARK EL	1114	4	114	4%
WALNUT PARK EL	1295	4	114	4%
RIO VISTA EL	443	3	86	3%
SHIRLEY EL	738	3	86	3%
BREED EL	704	2	58	3%
BYRD MS	1819	9	261	3%
CAPISTRANO EL	430	2	58	3%
LANGDON EL	1603	6	175	3%
BRYSON EL	1124	3	89	3%
HALE MS	2280	7	208	3%
109TH ST EL	505	1	30	3%
SUPERIOR EL		2	61	3%
BURBANK MS	2125	8	245	3%
MARLTON	374	9	278	3%
4TH ST EL	977	3	93	3%
BELLEVUE PRIMARY	195	1	31	3%
VALLEY NEW HS #1	574	2	62	3%
GAGE MS	3750	12	375	3%
CATSKILL EL	862	3	94	3%
WADSWORTH EL	1271	3	94	3%
WOODLAWN EL	982	3	94	3%
COLUMBUS MS	1102	5	157	3%
2ND ST EL	654	2	63	3%
WOODLAND HILLS EL	647	2	63	3%
CASTLE HTS EL	583	3	95	3%
TOLUCA LAKE EL	598	3	95	3%
MIRAMONTE EL	2040	5	160	3%
SAN FERNANDO MS	2178	8	257	3%
DANA MS	1991	9	290	3%
ARROYO SECO MUSM SCI	529	1	33	3%
BROADOUS EL	974	2	66	3%
BUDLONG EL	1305	3	99	3%
PINEWOOD EL	651	1	33	3%
WHITE EL	492	1	33	3%
BASSETT EL	1247	4	133	3%
DIXIE CANYON EL	586	3	101	3%
KING-DREW MED MAG	1668	1	34	3%
MULHOLLAND MS	1887	9	306	3%
CHASE EL	910	3	103	3%
MOUNT GLEASON MS		5	172	3%
SAN MIGUEL EL	1148	4	139	3%
15TH ST EL	715	2	70	3%
MACLAY MS	1337	4	140	3%
FERNANGELES EL	1127	3	107	3%
PALISADES CHRTR SH	2174	6	216	3%
RANCHITO EL	699	2	72	3%
LANTERMAN HS	218	6	217	3%
MARK TWAIN MS	1277	6	219	3%
KING MS	2604	8	294	3%

School Name	Total Enrollment	N not in Welligent	SWD	PCT Missing
DARBY EL	.	2	74	3%
PACOIMA MS	1775	5	186	3%
ENCINO EL	533	2	75	3%
RESEDA SH	2332	8	300	3%
VIRGIL MS	2803	8	302	3%
186TH ST EL	851	2	76	3%
COMMUNITY MAGNET	433	1	38	3%
CARNEGIE MS	1918	6	229	3%
NEVIN EL	963	2	77	3%
HOOVER EL	1758	3	116	3%
HOOPER EL	1954	4	155	3%
MACARTHUR PARK PC	303	1	39	3%
WILTON PL EL	1623	2	78	3%
SUN VALLEY MS	2901	7	276	3%
EVERGREEN EL	1007	2	79	3%
BIRMINGHAM SH	3315	10	400	3%
LACES MAG	1626	1	40	3%
GLEDHILL EL	589	3	121	2%
GARVANZA EL	598	2	81	2%
MARQUEZ EL	671	2	81	2%
TELFAIR EL	1197	3	122	2%
DREW MS	2579	7	289	2%
LOYOLA VILLAGE EL	356	1	42	2%
TWEEDY EL	754	1	42	2%
LOKRANTZ SP ED CTR	153	5	211	2%
24TH ST EL	1218	3	127	2%
SYLVAN PARK EL	1195	3	127	2%
EAGLE ROCK EL	958	3	130	2%
GARFIELD SH	4796	13	568	2%
SALVIN SP ED CTR	246	7	307	2%
BELL SH	4914	12	527	2%
CASTELAR EL	841	1	44	2%
SELLERY SP ED CTR	102	2	88	2%
LOMITA MATH/SCI MAG	1131	2	89	2%
POLITI EL	1068	2	89	2%
CARSON EL	766	2	90	2%
CITY TERRACE EL	498	1	45	2%
TARZANA EL	557	1	45	2%
WESTMINSTER EL	338	1	45	2%
WESTERN EL	888	3	136	2%
SOUTH GATE MS	2710	7	320	2%
EL SERENO EL	618	1	46	2%
STONEHURST EL	359	2	92	2%
WESTSIDE LDRSHIP MAG	474	1	46	2%
LOGAN EL	1067	2	93	2%
STONER EL	565	2	93	2%
156TH ST EL	336	1	47	2%
68TH ST EL	1189	2	94	2%
BELVEDERE EL	1187	2	94	2%
HARDING EL	723	2	94	2%
WEBSTER MS	1356	4	188	2%

School Name	Total Enrollment	N not in Welligent	SWD	PCT Missing
PRESIDENT EL	490	2	95	2%
VERMONT EL	1311	2	95	2%
EAGLE ROCK HS	2872	6	286	2%
PACIFIC PALISADES EL	412	1	48	2%
PARK WESTERN EL	384	1	48	2%
FAIR EL	1621	2	97	2%
WILLENBERG SP ED CTR	264	6	291	2%
PIO PICO EL	2187	5	245	2%
SUNLAND EL		2	98	2%
STATE EL	1463	3	148	2%
BEACHY EL	683	2	99	2%
MADISON MS	2169	6	297	2%
WILBUR EL	654	2	99	2%
BETHUNE MS	2348	5	248	2%
BUSHNELL WAY EL	593	1	50	2%
COHASSET EL	837	2	100	2%
MICHELTORENA EL	568	2	100	2%
BELMONT SH	4799	10	504	2%
STEVENSON MS	2511	5	255	2%
LOCKWOOD EL	965	2	103	2%
LASSEN EL	679	2	104	2%
CLEVELAND SH	2872	5	261	2%
LOMA VISTA EL	1428	3	157	2%
MAYBERRY EL	447	1	53	2%
OVERLAND EL	499	1	53	2%
LOCKHURST EL	460	2	107	2%
ASCOT EL	1101	2	108	2%
ELYSIAN HEIGHTS EL	344	1	54	2%
BALDWIN HILLS EL	470	1	55	2%
CHARNOCK ROAD EL	445	1	55	2%
E VALLEY AREA N MS#2	1683	4	220	2%
FULTON COLLEGE PREP	1670	4	220	2%
NORMONT EL	586	1	55	2%
NESTLE EL	521	1	56	2%
VENA EL	593	1	56	2%
SE AREA NEW MS #3	1374	3	170	2%
ADAMS MS	2102	3	171	2%
SOTO EL	366	1	57	2%
FLEMING MS	1697	4	229	2%
SHARP EL	992	2	115	2%
BANNING SH	3151	7	404	2%
GRANADA EL	513	2	116	2%
LOWMAN SP ED CTR	245	5	292	2%
HOLLENBECK MS	2529	5	293	2%
3RD ST EL	831	1	59	2%
WHITE POINT EL	487	1	59	2%
MARKHAM MS	1772	3	178	2%
REVERE MS	1815	3	178	2%
49TH ST EL	1835	2	120	2%
ANNALEE EL	472	1	60	2%
MARINA DEL REY MS	1079	2	120	2%

School Name	Total Enrollment	N not in Welligent	SWD	PCT Missing
BERENDO MS	3307	6	363	2%
GRIFFIN EL	707	1	61	2%
WEEMES EL	1545	2	123	2%
MIDDLETON EL	1876	3	188	2%
BELVEDERE MS	2272	4	252	2%
BROOKLYN AVE EL	630	1	63	2%
VAN NUYS MS	1430	3	190	2%
REED MS	2086	4	255	2%
74TH ST EL	689	1	64	2%
GRAHAM EL	1109	1	64	2%
SOUTH GATE SH	5116	7	448	2%
VAN GOGH EL	.	1	64	2%
SHERIDAN ST EL	1357	2	129	2%
CASTLEBAY LN EL	.	1	65	2%
VAN NUYS EL	931	2	130	2%
LE CONTE MS	2104	4	263	2%
LEMAY EL	375	1	66	2%
HUGHES EL	1472	2	133	2%
UNION EL	1470	2	133	2%
7TH ST EL	483	1	67	1%
LORNE EL	379	1	67	1%
107TH ST EL	1152	1	68	1%
NORWOOD EL	991	2	136	1%
STRATHERN EL	1227	2	136	1%
CANOGA PARK SH	2174	3	207	1%
GRIDLEY EL	1040	1	69	1%
VINE EL	936	2	140	1%
112TH ST EL	705	1	71	1%
CDS COOPER	155	1	72	1%
MONTE VISTA EL	628	1	72	1%
122ND ST EL	922	1	73	1%
BRADDOCK DRIVE EL	518	1	74	1%
UTAH EL	506	1	74	1%
HALLDALE EL	684	1	75	1%
HAYNES EL	330	1	75	1%
MULTNOMAH EL	457	1	75	1%
MAGNOLIA EL	1663	2	152	1%
VALERIO EL	1281	2	152	1%
DEARBORN EL	535	1	77	1%
SUNRISE EL	636	1	77	1%
BANCROFT MS	989	2	156	1%
GARDNER EL	468	1	78	1%
MARIANNA EL	489	1	78	1%
PARTHENIA EL	870	1	78	1%
SUTTER MS	1628	3	236	1%
ARMINTA EL	913	1	80	1%
HOBART BLVD EL	1964	2	162	1%
ARLINGTON HTS EL	894	1	82	1%
SIERRA PARK EL	1035	1	82	1%
NORTHRIDGE MS	1222	2	165	1%
JEFFERSON NEW ES #2	888	1	83	1%

School Name	Total Enrollment	N not in Welligent	SWD	PCT Missing
KITTRIDGE EL	1129	2	167	1%
BECKFORD EL	.	1	84	1%
KENTWOOD EL	385	1	84	1%
MELVIN EL	707	1	84	1%
SUNNY BRAE EL	912	1	84	1%
FROST MS	.	2	169	1%
ESHELMAN EL	731	1	85	1%
PRIMARY ACADEMY	507	1	87	1%
HAMLIN EL	418	1	89	1%
VICTORY EL	1283	1	89	1%
CRESTWOOD ST EL	499	1	90	1%
SEPULVEDA MS	1650	3	271	1%
HAMMEL EL	980	1	91	1%
HASKELL EL	434	1	91	1%
MALABAR EL	958	1	92	1%
HANCOCK PARK EL	720	1	93	1%
PORTER MS	1324	2	186	1%
DAYTON HEIGHTS EL	954	1	95	1%
SAN GABRIEL EL	1041	1	97	1%
CANTARA EL	702	1	98	1%
FRIES EL	1217	1	99	1%
MILLIKAN MS	1715	2	198	1%
MURCHISON EL	767	1	99	1%
CAMELLIA EL	1389	1	100	1%
SERRANIA EL	754	1	100	1%
MCBRIDE SP ED CTR	184	2	202	1%
PEREZ SP ED CTR	482	4	415	1%
HAWAIIAN EL	1088	1	104	1%
BANNEKER SP ED CTR	403	4	420	1%
GERMAIN EL	.	1	105	1%
WALGROVE EL	462	1	105	1%
10TH ST EL	1612	1	109	1%
MARVIN EL	894	1	110	1%
CANOGA PARK EL	1209	1	112	1%
HART ST EL	975	1	113	1%
LEICHMAN SP ED CTR	231	2	233	1%
NOBEL MS	.	1	123	1%
NIGHTINGALE MS	2018	2	252	1%
O MELVENY EL	655	1	127	1%
ALEXANDRIA EL	1807	1	130	1%
OXNARD EL	1087	1	130	1%
FLORENCE EL	1052	1	142	1%
LULL SP ED CTR	128	1	142	1%
STANFORD EL	1148	1	149	1%
HOLMES MS	1109	1	159	1%
BURTON EL	828	1	160	1%
WHITE MS	1994	1	201	0%
Total		3,848	71832	

Table 9. Not-in-Welligent by largest absolute number missing

School Name	Total Enrollment	N not in Welligent	SWD	PCT Missing
INF/PRESCHOOL PGM	.	635	3543	18%
MANUAL ARTS SH	3802	68	437	16%
LOS ANGELES SH	4640	59	527	11%
VAUGHN NEXT CENT LC	1451	54	89	61%
FAIRFAX SH	2773	48	313	15%
WASHINGTON PREP SH	2300	47	338	14%
WILSON SH	2629	42	436	10%
LOCKE SH	3410	40	398	10%
FREMONT SH	4839	40	529	8%
PACOIMA ELEMENTARY	1438	36	84	43%
JORDAN SH	2466	35	310	11%
JEFFERSON SH	3834	35	497	7%
MONROE SH	4227	34	568	6%
FOSHAY LC	3503	33	432	8%
CARSON SH	3662	32	295	11%
ROOSEVELT SH	4639	31	517	6%
AUDUBON MS	1744	29	280	10%
CRENSHAW SH	2635	29	405	7%
MARSHALL SH	4475	29	409	7%
ELIZABETH LC	2613	28	249	11%
CARVER MS	2854	27	251	11%
GARDENA SH	3278	27	338	8%
SYLMAR SH	3295	27	415	7%
GRANT SH	2813	26	326	8%
HOLLYWOOD SH	2803	26	355	7%
MANN MS	1614	24	255	9%
NO HOLLYWOOD SH	3935	24	384	6%
POLYTECHNIC SH	4133	24	505	5%
WIDNEY HS	259	22	254	9%
DORSEY SH	1635	22	309	7%
FRANKLIN SH	3114	22	359	6%
UNIVERSITY SH	2419	21	267	8%
MUIR MS	2295	21	275	8%
GOMPERS MS	2068	20	235	9%
EL CAMINO REAL SH	4033	20	238	8%
LOS ANGELES ACAD MS	2964	20	314	6%
HAMILTON SH-COMPLEX	2030	20	322	6%
ROWAN EL	1353	19	136	14%
VERDUGO HILLS SH	2226	19	212	9%
VAN NUYS SH	2373	18	276	7%
KENNEDY SH	3012	18	335	5%
CDS AGGELER	102	17	37	46%
SECONDARY CDS	193	17	41	41%
NARBONNE SH	3171	17	385	4%
SAN FERNANDO SH	4152	17	395	4%
NIMITZ MS	3593	17	401	4%
WRIGHT MS	904	16	123	13%
TAFT SH	3597	16	266	6%
CLAY MS	1948	16	302	5%
HUNTINGTON PARK SH	4573	16	363	4%
WESTCHESTER SH	2369	15	202	7%
School Name	Total	N not in	SWD	PCT Missing

	Enrollment	Welligent		
PEARY MS	2272	15	213	7%
MOUNT VERNON MS	1879	15	258	6%
VENICE SH	2671	15	330	5%
LINCOLN SH	2820	15	338	4%
SAN PEDRO SH	3106	15	389	4%
CITY OF ANGELS	2125	14	35	40%
CENTRAL HS	602	14	67	21%
MANHATTAN EL	639	14	94	15%
HARTE PREP MS	1742	14	205	7%
EL SERENO MS	2300	14	285	5%
CHATSWORTH SH	3099	14	306	5%
59TH ST EL	447	13	84	15%
GARFIELD SH	4796	13	568	2%
BARRETT EL	1256	12	79	15%
FENTON AVE SCHOOL	1408	12	123	10%
IRVING MS	1805	12	262	5%
GAGE MS	3750	12	375	3%
BELL SH	4914	12	527	2%
ACCELERATED CHARTER	679	11	14	79%
75TH ST EL	1697	11	120	9%
BURROUGHS MS	1822	11	170	6%
GRIFFITH MS	1989	11	254	4%
BRIGHT EL	893	10	65	15%
LA SALLE EL	1041	10	92	11%
BROAD AVE EL	1128	10	125	8%
BELL #3 SPAN SCHOOL	1805	10	174	6%
OLIVE VISTA MS	1882	10	196	5%
EDISON MS	2562	10	271	4%
BIRMINGHAM SH	3315	10	400	3%
BELMONT SH	4799	10	504	2%
ELLINGTON HS	112	9	20	45%
CDS TRI-C	163	9	43	21%
CANFIELD EL	374	9	80	11%
52ND ST EL	1074	9	91	10%
HILLCREST DR EL	1097	9	104	9%
95TH ST EL	1299	9	107	8%
ESPERANZA EL	1047	9	114	8%
ERWIN EL	1059	9	132	7%
NORMANDIE EL	1185	9	199	5%
CORONA EL	1851	9	221	4%
LAWRENCE MS	1754	9	241	4%
BYRD MS	1819	9	261	3%
MARLTON	374	9	278	3%
DANA MS	1991	9	290	3%
MULHOLLAND MS	1887	9	306	3%
MC KINLEY EL	1034	8	71	11%
61ST ST EL	971	8	75	11%
HYDE PARK EL	950	8	92	9%
HAZELTINE EL	1216	8	95	8%
INDEPENDENCE EL	863	8	101	8%
RIVERSIDE EL	672	8	108	7%
EMERSON MS	1548	8	167	5%
HENRY MS	.	8	184	4%
School Name	Total	N not in	SWD	PCT Missing

	Enrollment	Welligent		
MILES EL	2552	8	189	4%
BURBANK MS	2125	8	245	3%
SAN FERNANDO MS	2178	8	257	3%
KING MS	2604	8	294	3%
RESEDA SH	2332	8	300	3%
VIRGIL MS	2803	8	302	3%
ANGELES MESA EL	670	7	77	9%
SATICOY EL	734	7	86	8%
KING JR EL	1066	7	90	8%
WOODCREST EL	1371	7	93	8%
FORD BLVD EL	1381	7	127	6%
6TH AVE EL	964	7	132	5%
WILSHIRE CREST EL	650	7	142	5%
PALMS MS	1477	7	183	4%
MILLER HS	202	7	193	4%
HALE MS	2280	7	208	3%
SUN VALLEY MS	2901	7	276	3%
DREW MS	2579	7	289	2%
SALVIN SP ED CTR	246	7	307	2%
SOUTH GATE MS	2710	7	320	2%
BANNING SH	3151	7	404	2%
SOUTH GATE SH	5116	7	448	2%
NAPA EL	770	6	54	11%
FLOURNOY EL	737	6	61	10%
LANAI EL	507	6	66	9%
RUSSELL EL	1352	6	72	8%
KESTER EL	649	6	79	8%
TRINITY EL	1341	6	84	7%
HUMPHREYS EL	779	6	87	7%
CAROLDALE LRNG COMM	1106	6	88	7%
LIBERTY EL	1303	6	88	7%
153RD ST EL	625	6	89	7%
HUNTINGTON DR EL	637	6	91	7%
PARK AVE EL	735	6	94	6%
LOS ANGELES EL	1054	6	98	6%
PARMELEE EL	1426	6	99	6%
FISHBURN EL	1086	6	132	5%
GULF EL		6	132	5%
LIGGETT EL	1225	6	145	4%
PARKMAN MS	1266	6	153	4%
DODSON MS	1417	6	155	4%
LANGDON EL	1603	6	175	3%
PALISADES CHRTR SH	2174	6	216	3%
LANTERMAN HS	218	6	217	3%
MARK TWAIN MS	1277	6	219	3%
CARNEGIE MS	1918	6	229	3%
EAGLE ROCK HS	2872	6	286	2%
WILLENBERG SP ED CTR	264	6	291	2%
MADISON MS	2169	6	297	2%
BERENDO MS	3307	6	363	2%
CDS JOHNSON	124	5	20	25%
CDS WEST HOLLYWOOD	70	5	21	24%
RILEY HS-CYESIS	126	5	24	21%
School Name	Total	N not in	SWD	PCT Missing

	Enrollment	Welligent		
WRIGHT M/S AERO MAG	401	5	27	19%
116TH ST EL	486	5	41	12%
BRADLEY ENV/HUMAN MG	632	5	55	9%
EUCLID EL	799	5	56	9%
LORENA EL	831	5	56	9%
CIENEGA EL	930	5	62	8%
GLENWOOD EL	642	5	66	8%
GRIFFITH JOYNER EL	1065	5	66	8%
96TH ST EL	1019	5	73	7%
COWAN EL	483	5	76	7%
GRATTS EL	959	5	78	6%
ROSEWOOD EL	561	5	80	6%
135TH ST EL	958	5	83	6%
CENTURY PK EL	762	5	86	6%
20TH ST EL	860	5	88	6%
MAYALL EL	465	5	88	6%
SATURN EL	621	5	88	6%
MONLUX EL	624	5	102	5%
SAN PEDRO EL	809	5	104	5%
NUEVA VISTA EL	1213	5	107	5%
WEST ATHENS EL	1079	5	114	4%
MANCHESTER EL	1486	5	118	4%
CURTISS MS	1073	5	124	4%
NOBLE EL	1861	5	125	4%
HARRISON EL	1153	5	131	4%
COLUMBUS MS	1102	5	157	3%
MIRAMONTE EL	2040	5	160	3%
MOUNT GLEASON MS		5	172	3%
PACOIMA MS	1775	5	186	3%
LOKRANTZ SP ED CTR	153	5	211	2%
PIO PICO EL	2187	5	245	2%
BETHUNE MS	2348	5	248	2%
STEVENSON MS	2511	5	255	2%
CLEVELAND SH	2872	5	261	2%
LOWMAN SP ED CTR	245	5	292	2%
HOLLENBECK MS	2529	5	293	2%
EVERGREEN HS	81	4	11	36%
ROGERS HS	91	4	15	27%
YTH OPP UNLTD ALT HS	348	4	24	17%
9TH ST EL	484	4	29	14%
VALERIO NEW PC	249	4	36	11%
WARNER EL	678	4	39	10%
CABRILLO EL	581	4	44	9%
GRAPE EL	804	4	48	8%
BROADACRES EL	462	4	54	7%
CIMARRON EL	455	4	60	7%
DOLORES EL	779	4	64	6%
TULSA EL	583	4	73	5%
BEETHOVEN EL	361	4	74	5%
BRENTWOOD SCI MAG	1178	4	74	5%
SAN ANTONIO ELEM	749	4	81	5%
WEST VERNON EL	1419	4	85	5%
COLDWATER CYN EL	1231	4	86	5%
School Name	Total	N not in	SWD	PCT Missing

	Enrollment	Welligent		
LELAND EL	644	4	86	5%
ARAGON EL	686	4	89	4%
MILLER EL	1205	4	90	4%
WESTWOOD EL	750	4	92	4%
FLETCHER DR EL	891	4	94	4%
MENLO EL	1278	4	96	4%
GLASELL PARK EL	792	4	103	4%
SHENANDOAH EL	799	4	103	4%
28TH ST EL	1864	4	107	4%
DYER EL	1077	4	108	4%
VICTORIA EL	1512	4	111	4%
SAN FERNANDO EL	829	4	113	4%
SOUTH PARK EL	1114	4	114	4%
WALNUT PARK EL	1295	4	114	4%
BASSETT EL	1247	4	133	3%
SAN MIGUEL EL	1148	4	139	3%
MACLAY MS	1337	4	140	3%
HOOPER EL	1954	4	155	3%
WEBSTER MS	1356	4	188	2%
E VALLEY AREA N MS#2	1683	4	220	2%
FULTON COLLEGE PREP	1670	4	220	2%
FLEMING MS	1697	4	229	2%
BELVEDERE MS	2272	4	252	2%
REED MS	2086	4	255	2%
LE CONTE MS	2104	4	263	2%
PEREZ SP ED CTR	482	4	415	1%
BANNEKER SP ED CTR	403	4	420	1%
MONROE POLICE ACD MG	147	3	10	30%
EAST VALLEY NEW CONT HS #1	0	3	11	27%
MISSION HS	64	3	16	19%
GRANT COMM MAG	388	3	18	17%
RIORDAN PC	331	3	22	14%
RITTER EL	425	3	30	10%
DEL AMO EL	514	3	35	9%
MC ALISTER HS-CYESIS	199	3	35	9%
POINT FERMIN EL	329	3	35	9%
LAFAYETTE PARK PC	271	3	36	8%
LEONIS HS	119	3	40	8%
HAMILTON MUS ACAD MG	916	3	42	7%
AMBLER EL	489	3	44	7%
WINDSOR M/S AERO MAG	747	3	44	7%
WEIGAND EL	506	3	47	6%
LAUREL EL	446	3	48	6%
CRESCENT HTS EL	387	3	50	6%
SAN PASCUAL EL	353	3	50	6%
118TH ST EL	792	3	51	6%
AMESTOY EL	793	3	51	6%
BRIDGE EL	409	3	52	6%
GARDENA EL	816	3	53	6%
PURCHE EL	619	3	53	6%
FULLBRIGHT EL	608	3	54	6%
OSCEOLA EL	448	3	57	5%
LORETO EL	656	3	64	5%
School Name	Total	N not in	SWD	PCT Missing

	Enrollment	Welligent		
DENKER EL	893	3	68	4%
STERRY EL	358	3	68	4%
COLISEUM EL	384	3	69	4%
SELMA EL	587	3	70	4%
RAYMOND AVE EL	726	3	72	4%
SHERMAN OAKS EL	932	3	72	4%
ANDASOL EL		3	73	4%
66TH ST EL	1410	3	74	4%
HUBBARD EL	1023	3	75	4%
JUSTICE EL	471	3	81	4%
CAHUENGA EL	1349	3	83	4%
DENA EL	951	3	84	4%
EL DORADO EL	714	3	85	4%
NEWCASTLE EL	469	3	85	4%
RIO VISTA EL	443	3	86	3%
SHIRLEY EL	738	3	86	3%
BRYSON EL	1124	3	89	3%
4TH ST EL	977	3	93	3%
CATSKILL EL	862	3	94	3%
WADSWORTH EL	1271	3	94	3%
WOODLAWN EL	982	3	94	3%
CASTLE HTS EL	583	3	95	3%
TOLUCA LAKE EL	598	3	95	3%
BUDLONG EL	1305	3	99	3%
DIXIE CANYON EL	586	3	101	3%
CHASE EL	910	3	103	3%
FERNANGELES EL	1127	3	107	3%
HOOVER EL	1758	3	116	3%
GLEDHILL EL	589	3	121	2%
TELFAIR EL	1197	3	122	2%
24TH ST EL	1218	3	127	2%
SYLVAN PARK EL	1195	3	127	2%
EAGLE ROCK EL	958	3	130	2%
WESTERN EL	888	3	136	2%
STATE EL	1463	3	148	2%
LOMA VISTA EL	1428	3	157	2%
SE AREA NEW MS #3	1374	3	170	2%
ADAMS MS	2102	3	171	2%
MARKHAM MS	1772	3	178	2%
REVERE MS	1815	3	178	2%
MIDDLETON EL	1876	3	188	2%
VAN NUYS MS	1430	3	190	2%
CANOGA PARK SH	2174	3	207	1%
SUTTER MS	1628	3	236	1%
SEPULVEDA MS	1650	3	271	1%
VIEW PARK PREP CHTR	249	2	2	100%
YOUNG HS	71	2	3	67%
ARCO IRIS PRIMRY CTR	197	2	5	40%
BURROUGHS G/HA MAG	460	2	6	33%
NHHS/LA ZOO BIOL MAG	293	2	6	33%
PHOENIX HS	58	2	7	29%
SAN PEDRO POL ACD MG	118	2	9	22%
ACAD SEMILLAS PUEBLO	263	2	11	18%
School Name	Total	N not in	SWD	PCT Missing

	Enrollment	Welligent		
COLLEGE-READY ACD HS	210	2	11	18%
EARHART HS	118	2	11	18%
CURTISS MATH/SCI MAG	366	2	14	14%
FAIRFAX VIS ARTS MAG	358	2	14	14%
KENNEDY HS ARCH/DIGT	360	2	17	12%
SAN ANTONIO HS	89	2	20	10%
HOLLYWOOD PER ART MG	379	2	24	8%
PLAYA DEL REY EL	244	2	24	8%
AVALON GARDENS EL	257	2	25	8%
DOWNTWN BUSINESS MAG	670	2	25	8%
TOPANGA EL	300	2	25	8%
CAMINO NUEVO CHTR AC	510	2	30	7%
BONITA EL	702	2	36	6%
ANN EL	221	2	37	5%
OPEN CHARTER MAGNET	364	2	38	5%
ALBION EL	491	2	41	5%
TOWNE EL	415	2	42	5%
GARDEN GROVE EL	474	2	43	5%
CLOVER EL	534	2	46	4%
ROSCOMARE EL	518	2	46	4%
92ND ST EL	970	2	47	4%
ANNANDALE EL	345	2	47	4%
QUEEN ANNE EL	505	2	48	4%
PALMS EL	517	2	49	4%
ALDAMA EL	770	2	50	4%
WESTPORT HTS EL	497	2	50	4%
32ND/USC PER ART MAG	734	2	53	4%
CHEREMOYA EL	436	2	53	4%
MONTAGUE ST SCHOOL	1125	2	53	4%
42ND ST EL	643	2	54	4%
LEAPWOOD EL	428	2	54	4%
APPERSON EL		2	55	4%
COLUMBUS AVE EL	677	2	55	4%
GRAND VIEW EL	769	2	55	4%
TOLAND WAY EL	574	2	56	4%
BREED EL	704	2	58	3%
CAPISTRANO EL	430	2	58	3%
SUPERIOR EL		2	61	3%
VALLEY NEW HS #1	574	2	62	3%
2ND ST EL	654	2	63	3%
WOODLAND HILLS EL	647	2	63	3%
BROADOUS EL	974	2	66	3%
15TH ST EL	715	2	70	3%
RANCHITO EL	699	2	72	3%
DARBY EL		2	74	3%
ENCINO EL	533	2	75	3%
186TH ST EL	851	2	76	3%
NEVIN EL	963	2	77	3%
WILTON PL EL	1623	2	78	3%
EVERGREEN EL	1007	2	79	3%
GARVANZA EL	598	2	81	2%
MARQUEZ EL	671	2	81	2%
SELLERY SP ED CTR	102	2	88	2%
School Name	Total	N not in	SWD	PCT Missing

	Enrollment	Welligent		
LOMITA MATH/SCI MAG	1131	2	89	2%
POLITI EL	1068	2	89	2%
CARSON EL	766	2	90	2%
STONEHURST EL	359	2	92	2%
LOGAN EL	1067	2	93	2%
STONER EL	565	2	93	2%
68TH ST EL	1189	2	94	2%
BELVEDERE EL	1187	2	94	2%
HARDING EL	723	2	94	2%
PRESIDENT EL	490	2	95	2%
VERMONT EL	1311	2	95	2%
FAIR EL	1621	2	97	2%
SUNLAND EL		2	98	2%
BEACHY EL	683	2	99	2%
WILBUR EL	654	2	99	2%
COHASSET EL	837	2	100	2%
MICHELTORENA EL	568	2	100	2%
LOCKWOOD EL	965	2	103	2%
LASSEN EL	679	2	104	2%
LOCKHURST EL	460	2	107	2%
ASCOT EL	1101	2	108	2%
SHARP EL	992	2	115	2%
GRANADA EL	513	2	116	2%
49TH ST EL	1835	2	120	2%
MARINA DEL REY MS	1079	2	120	2%
WEEMES EL	1545	2	123	2%
SHERIDAN ST EL	1357	2	129	2%
VAN NUYS EL	931	2	130	2%
HUGHES EL	1472	2	133	2%
UNION EL	1470	2	133	2%
NORWOOD EL	991	2	136	1%
STRATHERN EL	1227	2	136	1%
VINE EL	936	2	140	1%
MAGNOLIA EL	1663	2	152	1%
VALERIO EL	1281	2	152	1%
BANCROFT MS	989	2	156	1%
HOBART BLVD EL	1964	2	162	1%
NORTHRIDGE MS	1222	2	165	1%
KITTRIDGE EL	1129	2	167	1%
FROST MS		2	169	1%
PORTER MS	1324	2	186	1%
MILLIKAN MS	1715	2	198	1%
MCBRIDE SP ED CTR	184	2	202	1%
LEICHMAN SP ED CTR	231	2	233	1%
NIGHTINGALE MS	2018	2	252	1%
AMESTOY TRILINGUAL MG	99	1	1	100%
BALDWIN HLS G/HA MAG	167	1	1	100%
HILLCREST CES/MUS MG	141	1	1	100%
SAN JOSE HG MAG	69	1	1	100%
SO GATE MTH/SCI MAG	114	1	1	100%
JORDAN MATH/SCI MAG	218	1	2	50%
PATTON HS	66	1	2	50%
ADDAMS HS	84	1	3	33%
School Name	Total	N not in	SWD	PCT Missing

	Enrollment	Welligent		
BRYSON EL M/S/T	138	1	3	33%
NO HOLLYWOOD HG MAG	318	1	3	33%
PORTER G/HA MAG	460	1	3	33%
ANGEL'S GATE HS	59	1	4	25%
BANNING CIP MAG	316	1	4	25%
MIDDLE COLLEGE HS	357	1	4	25%
MONTEREY HS	75	1	4	25%
ACCELERATED ELEM	59	1	5	20%
MARVIN DUAL LANG MAG	163	1	6	17%
RESEDA POLICE ACD MG	160	1	6	17%
SAN PEDRO MAR/M/S MG	352	1	6	17%
VIEW PARK CONTN HS	84	1	6	17%
VERDUGO HLS MEDIA MG	179	1	8	13%
PACOIMA TV/TH/FA MAG	268	1	9	11%
SOLANO EL	270	1	11	9%
MULTICULT LRN CTR	223	1	12	8%
MONROE LAW/GOV MAG	385	1	13	8%
RAMONA HS	133	1	13	8%
LORNE MATH/SCI MAG	314	1	14	7%
HIGHLAND PARK HS	82	1	16	6%
VAN NUYS PER ARTS MG	440	1	17	6%
BANCROFT PER ART MAG	468	1	18	6%
DOUGLAS HS		1	18	6%
MARINA DEL REY PA MG	269	1	18	6%
BIRMINGHAM JOURN MAG	498	1	19	5%
JEFFERSON NEW PC #6	202	1	20	5%
LAUSD/USC MTH/SC MAG	268	1	20	5%
JOHN WOODEN HS	69	1	21	5%
INDEPENDENCE HS	97	1	23	4%
INTERNATIONAL ST LC	335	1	23	4%
WSTCHSTR M/S AER MAG	356	1	23	4%
NOBEL MATH/SCI MAG		1	24	4%
ALEXANDER SCI CTR SC	669	1	27	4%
LATONA EL	439	1	27	4%
109TH ST EL	505	1	30	3%
BELLEVUE PRIMARY	195	1	31	3%
ARROYO SECO MUSM SCI	529	1	33	3%
PINEWOOD EL	651	1	33	3%
WHITE EL	492	1	33	3%
KING-DREW MED MAG	1668	1	34	3%
COMMUNITY MAGNET	433	1	38	3%
MACARTHUR PARK PC	303	1	39	3%
LACES MAG	1626	1	40	3%
LOYOLA VILLAGE EL	356	1	42	2%
TWEEDY EL	754	1	42	2%
CASTELAR EL	841	1	44	2%
CITY TERRACE EL	498	1	45	2%
TARZANA EL	557	1	45	2%
WESTMINSTER EL	338	1	45	2%
EL SERENO EL	618	1	46	2%
WESTSIDE LDRSHIP MAG	474	1	46	2%
156TH ST EL	336	1	47	2%
PACIFIC PALISADES EL	412	1	48	2%
School Name	Total	N not in	SWD	PCT Missing

	Enrollment	Welligent		
PARK WESTERN EL	384	1	48	2%
BUSHNELL WAY EL	593	1	50	2%
MAYBERRY EL	447	1	53	2%
OVERLAND EL	499	1	53	2%
ELYSIAN HEIGHTS EL	344	1	54	2%
BALDWIN HILLS EL	470	1	55	2%
CHARNOCK ROAD EL	445	1	55	2%
NORMONT EL	586	1	55	2%
NESTLE EL	521	1	56	2%
VENA EL	593	1	56	2%
SOTO EL	366	1	57	2%
3RD ST EL	831	1	59	2%
WHITE POINT EL	487	1	59	2%
ANNALEE EL	472	1	60	2%
GRIFFIN EL	707	1	61	2%
BROOKLYN AVE EL	630	1	63	2%
74TH ST EL	689	1	64	2%
GRAHAM EL	1109	1	64	2%
VAN GOGH EL	.	1	64	2%
CASTLEBAY LN EL	.	1	65	2%
LEMAY EL	375	1	66	2%
7TH ST EL	483	1	67	1%
LORNE EL	379	1	67	1%
107TH ST EL	1152	1	68	1%
GRIDLEY EL	1040	1	69	1%
112TH ST EL	705	1	71	1%
CDS COOPER	155	1	72	1%
MONTE VISTA EL	628	1	72	1%
122ND ST EL	922	1	73	1%
BRADDOCK DRIVE EL	518	1	74	1%
UTAH EL	506	1	74	1%
HALLDALE EL	684	1	75	1%
HAYNES EL	330	1	75	1%
MULTNOMAH EL	457	1	75	1%
DEARBORN EL	535	1	77	1%
SUNRISE EL	636	1	77	1%
GARDNER EL	468	1	78	1%
MARIANNA EL	489	1	78	1%
PARTHENIA EL	870	1	78	1%
ARMINTA EL	913	1	80	1%
ARLINGTON HTS EL	894	1	82	1%
SIERRA PARK EL	1035	1	82	1%
JEFFERSON NEW ES #2	888	1	83	1%
BECKFORD EL	.	1	84	1%
KENTWOOD EL	385	1	84	1%
MELVIN EL	707	1	84	1%
SUNNY BRAE EL	912	1	84	1%
ESHELMAN EL	731	1	85	1%
PRIMARY ACADEMY	507	1	87	1%
HAMLIN EL	418	1	89	1%
VICTORY EL	1283	1	89	1%
CRESTWOOD ST EL	499	1	90	1%
HAMMEL EL	980	1	91	1%
School Name	Total	N not in	SWD	PCT Missing

	Enrollment	Welligent		
HASKELL EL	434	1	91	1%
MALABAR EL	958	1	92	1%
HANCOCK PARK EL	720	1	93	1%
DAYTON HEIGHTS EL	954	1	95	1%
SAN GABRIEL EL	1041	1	97	1%
CANTARA EL	702	1	98	1%
FRIES EL	1217	1	99	1%
MURCHISON EL	767	1	99	1%
CAMELLIA EL	1389	1	100	1%
SERRANIA EL	754	1	100	1%
HAWAIIAN EL	1088	1	104	1%
GERMAIN EL		1	105	1%
WALGROVE EL	462	1	105	1%
10TH ST EL	1612	1	109	1%
MARVIN EL	894	1	110	1%
CANOGA PARK EL	1209	1	112	1%
HART ST EL	975	1	113	1%
NOBEL MS		1	123	1%
O MELVENY EL	655	1	127	1%
ALEXANDRIA EL	1807	1	130	1%
OXNARD EL	1087	1	130	1%
FLORENCE EL	1052	1	142	1%
LULL SP ED CTR	128	1	142	1%
STANFORD EL	1148	1	149	1%
HOLMES MS	1109	1	159	1%
BURTON EL	828	1	160	1%
WHITE MS	1994	1	201	0%
Total		3,848	71832	