

Site Survey of Selected Items  
for  
Compliance with the Americans with Disabilities Act  
(ADAAG)  
and  
Title 24 of the CBC



This report identifies noncompliant items in new construction and provides recommended methods for removal of the barriers identified.

The site survey of Ellen Ochoa Learning Center was conducted on February 27, 2007 during a spot check for compliance with the Americans with Disabilities Act Guidelines (ADAAG) and Title 24 of the CBC

This report is not intended to be a complete inspection of the facility.

# Facility Name: Ellen Ochoa Learning Center

## Programs, Services, and Activities

**Finding:** The Ellen Ochoa Learning Center is located at 5027 Live Oak Street in Cudahy California. The Center was opened in 2000 and provides services to students in grades K thru 8. The facility was inspected by Disability Access Consultants, Inc., on February 27, 2007. This is a report of selected items and in not intended as a full report.



**Alternative Rec:** \*  
(Where Available)

Citation: ADAAG 4.1.2; ADAAG 4.1.3; ADAAG 4.1.5; ADAAG 4.1.6

Minimum Quantity: 1  
Maximum Quantity: 1  
Unit: None Selected  
Minimum Estimated Cost: 0  
**Maximum Estimated Cost: 0**  
Record Number: 2  
Priority:

**Full Rec** Any renovation or new construction that occurred after January 26, 1992, is subject to meet full code specifications for the California Building Code and ADAAG requirements. All recommendations in this report are based on ADAAG and CBC title 24 requirements. Consult with your design professional to determine which elements are affected by these requirements. It is recommended that Disability Access Consultants, Inc. is consulted for inspection of any new construction or renovation at the facility.

## Parking

**Finding:** There are two accessible parking spaces in the parking lot off of Florence Avenue. There is no van-accessible space, the shared access aisle is not 96 inches wide, and the right space is not outlined on the right side. The access aisle does not contain "NO PARKING" in 12" high white letters.



Accessible Parking

**Alternative Rec:** \*  
(Where Available)

Citation: CBC 1129B; ADAAG 4.6; ADAAG A4.6

Minimum Quantity: 1  
Maximum Quantity: 1  
Unit: Each  
Minimum Estimated Cost: 270  
**Maximum Estimated Cost: 270**  
Record Number: 111  
Priority:

**Full Rec** Restripe the designated accessible parking spaces to create one van-accessible and one standard accessible parking space, each measuring at least 108 inches wide and 216 inches long with an access aisle measuring at least 96 inches wide (8 feet) shared between the two accessible parking spaces (see CBC 1129B). The accessible parking space with the access aisle to the right of the space shall be designated "van-accessible." Add the words NO PARKING in 12 inch high white letters at the entrance to each accessible parking access aisle.

# Facility Name: Ellen Ochoa Learning Center

## Parking

**Finding:** There is no post-mounted sign showing the International Symbol of Accessibility at the head of each parking space.

**Alternative Rec:** \*  
(Where Available)



Accessible Parking

**Full Rec** Install a permanently posted reflectorized sign measuring 70 square inches that includes an ISA symbol adjacent to and visible from each accessible parking space (see CBC 1129B.5). The bottom edge of each sign must be mounted 80 inches from the ground surface so that it cannot be obscured by a parked vehicle (see CBC 1129B.5). The "van-accessible" parking space shall provide an additional sign marked "van-accessible" mounted below the sign (see CBC 1129B.5 and ADAAG 4.6.4).

Citation: CBC 1129B.5; ADAAG 4.6.4

Minimum Quantity:	1
Maximum Quantity:	2
Unit:	Each
Minimum Estimated Cost:	150
<b>Maximum Estimated Cost:</b>	<b>300</b>
Record Number	112
Priority:	

## Parking

**Finding:** There is warning signage posted at the entrance from Florence Avenue regarding unauthorized use of accessible parking spaces in the parking lot. The lettering on the sign has been vandalized. The sign does not contain the California Vehicle Code.

**Alternative Rec:** \*  
(Where Available)



Accessible Parking

**Full Rec** Fill in the blank spaces which are required to furnish the point of contact and telephone number for reclaiming towed vehicles with the appropriate information as a permanent part of the sign and maintain the currency of the information (see CBC 1129B.5). Make sure to add the CVC22511.8(a)(d) to the sign.

Citation: CBC 1129B.5; ADAAG 4.6.4 CVC 22511.8(a)(d).

Minimum Quantity:	1
Maximum Quantity:	1
Unit:	Each
Minimum Estimated Cost:	150
<b>Maximum Estimated Cost:</b>	<b>150</b>
Record Number	113
Priority:	

# Facility Name: Ellen Ochoa Learning Center

## Parking

**Finding:** There is no crosswalk provided on the path of travel from the accessible parking space to the facility. The required accessible route crosses a vehicular way.

**Alternative Rec:** \*  
(Where Available)



Accessible Parking

**Full Rec** Stripe a crosswalk not less than 48 inches wide on the path of travel to the accessible entrance. Provide a level surface that does not exceed a slope greater than 5%. Cross slopes shall not exceed 2%. Detectable warnings should be placed at the entrance and exit of the crosswalk.

Citation: ADAAG 4.7.9

Minimum Quantity: 1  
 Maximum Quantity: 1  
 Unit: Each  
 Minimum Estimated Cost: 100  
**Maximum Estimated Cost: 100**  
 Record Number 115  
 Priority:

## Parking

**Finding:** There are three accessible parking spaces located next to the MPR. The far right space is not outlined on the right side and each access aisle does not contain "NO PARKING" in 12" high white letters.

**Alternative Rec:** \*  
(Where Available)



Accessible Parking next to the MPR

**Full Rec** Restripe the existing far right space on the right side and add the words NO PARKING in 12 inch high white letters at the entrance to each accessible parking access aisle.

Citation: CBC 1129B; ADAAG 4.6; ADAAG A4.6

Minimum Quantity: 1  
 Maximum Quantity: 1  
 Unit: Each  
 Minimum Estimated Cost: 270  
**Maximum Estimated Cost: 270**  
 Record Number 122  
 Priority:



**Facility Name: Ellen Ochoa Learning Center**

**Parking**

**Finding:** There is warning signage posted at the entrance from Live Oak regarding unauthorized use of accessible parking spaces in the parking lot. The lettering on the sign has been vandalized and the California Vehicle Code is not present.

**Alternative Rec: (Where Available)** \*



Accessible Parking next to the MPR

Citation: CBC 1129B.5; ADAAG 4.6.4 CVC 22511.8(a)(d).

Minimum Quantity:	1
Maximum Quantity:	1
Unit:	Each
Minimum Estimated Cost:	150
<b>Maximum Estimated Cost:</b>	<b>150</b>
Record Number	123
Priority:	

**Full Rec** Fill in the blank spaces which are required to furnish the point of contact and telephone number for reclaiming towed vehicles with the appropriate information as a permanent part of the sign and maintain the currency of the information (see CBC 1129B.5). Make sure to add the CVC22511.8(a)(d) to the sign.

**Parking**

**Finding:** At the entrance to each access aisle the pedestrian and vehicular route is level and not separated by a ramp, curb or other element . There are no detectable warning stripes affixed to the entrance of each access aisle.

**Alternative Rec: (Where Available)** \*



Parking next to the MPR

Citation: CBC 1127B.5.8 ADAAG 4.7.9 & 4.29

Minimum Quantity:	1
Maximum Quantity:	1
Unit:	Square Foot
Minimum Estimated Cost:	25
<b>Maximum Estimated Cost:</b>	<b>25</b>
Record Number	121
Priority:	

**Full Rec** Affix detectable warning stripes to the entrance and exit of each access aisle.

# Facility Name: Ellen Ochoa Learning Center

## Passenger Loading Zones

**Finding:** There is no required striped access aisle adjacent to the passenger loading zone on Live Oak Street. There is no signage designating accessibility posted at the passenger loading zone.

**Alternative Rec:** \*  
**(Where Available)**



Bus Loading Zone in front of the School

**Full Rec** Stripe an access aisle at least 5 feet (60 inches) wide and 20 feet (240 inches) long adjacent and parallel to the vehicle pull-up space. The access aisle striping for the passenger loading zone shall provide immediate access to the adjacent curb ramp. Post signage designating the passenger loading zone as accessible (see CBC 1131B and ADAAG 4.1.2(7)(b)). The sign should contain the International Symbol of Accessibility.

Citation: CBC 1131B; ADAAG 4.6.6; ADAAG 4.1.2(7)(b)

Minimum Quantity:	1
Maximum Quantity:	1
Unit:	Each
Minimum Estimated Cost:	300
<b>Maximum Estimated Cost:</b>	<b>300</b>
Record Number	103
Priority:	

## Curb Ramps

**Finding:** The built-up curb ramp projects into vehicular traffic and access aisle and interferes with individuals entering or exiting parked or standing vehicles. The curb ramp does not have a detectable warning surface of truncated domes.

**Alternative Rec:** \*  
**(Where Available)**



Curb Ramp at the Access Aisle

**Full Rec** Provide a compliant curb ramp at the access aisle.

Citation: CBC 1127B; ADAAG 4.7

Minimum Quantity:	1
Maximum Quantity:	1
Unit:	Each
Minimum Estimated Cost:	1400
<b>Maximum Estimated Cost:</b>	<b>1400</b>
Record Number	114
Priority:	

# Facility Name: Ellen Ochoa Learning Center

## Curb Ramps

**Finding:** The slope of the top and bottom landing is greater than 2%. The slope of the side flares is greater than 10%. There is no detectable warning surface of truncated domes.

**Alternative Rec:** \*  
(Where Available)



Curb Ramp at the Bus Loading Zone

**Full Rec** Replace the concrete curb-cut ramp with a concrete curb-cut ramp at least 48 inches in width that provides a slope no greater than 8.33% and a cross slope no greater than 2%. The slope of the top landing shall not exceed 2% and shall provide at least 48 inches in length of maneuvering clearance. The bottom landing shall provide a smooth transition. The side flares shall be no greater in slope than 10%. Provide a compliant 36 inch strip of truncated domes on the curb ramp.

Citation: CBC 1127B.5.3; ADAAG 4.7.2

Minimum Quantity:	1
Maximum Quantity:	1
Unit:	Each
Minimum Estimated Cost:	1033
<b>Maximum Estimated Cost:</b>	<b>1033</b>
Record Number	104
Priority:	

## Curb Ramps

**Finding:** The slope of the side flares is greater than 10%. There is no detectable warning surface of truncated domes.

**Alternative Rec:** \*  
(Where Available)



Curb Ramp at the Florence Avenue Parking Lot

**Full Rec** Replace the concrete curb-cut ramp with a concrete curb-cut ramp at least 48 inches in width that provides a slope no greater than 8.33% and a cross slope no greater than 2%. The slope of the top landing shall not exceed 2% and shall provide at least 48 inches in length of maneuvering clearance. The bottom landing shall provide a smooth transition. The side flares shall be no greater in slope than 10%. Provide a compliant 36 inch strip of truncated domes.

Citation: CBC 1127B.5.3; ADAAG 4.7.2

Minimum Quantity:	1
Maximum Quantity:	1
Unit:	Each
Minimum Estimated Cost:	1033
<b>Maximum Estimated Cost:</b>	<b>1033</b>
Record Number	116
Priority:	

# Facility Name: Ellen Ochoa Learning Center

## Path of Travel

**Finding:** The sidewalk from Live oak Street to the main entrance slopes greater than 5%.

**Alternative Rec: \***  
**Rec:**  
**(Where Available)**



Sidewalk to the Main Entrance

Citation: CBC 1133B.7.1.3; CBC 1133B.7.3; ADAAG 4.3.7

Minimum Quantity:	1
Maximum Quantity:	1
Unit:	4' x 60'
Minimum Estimated Cost:	1440
<b>Maximum Estimated Cost:</b>	<b>1440</b>
Record Number	102
Priority:	

**Full Rec** Resurface the path of travel to provide a level surface that does not exceed a slope greater than 5%. Cross slopes shall not exceed 2%. Otherwise the sidewalk qualifies as a ramp and will have to meet ramp compliant standards.

## Stairs

**Finding:** The width of the stairway is greater than 88 inches and does not have a middle handrail.

**Alternative Rec: \***  
**Rec:**  
**(Where Available)**



Exterior Stairs next to the Bus Loading Zone

Citation: CBC 1006.9.1

Minimum Quantity:	1
Maximum Quantity:	1
Unit:	24 Linear Feet
Minimum Estimated Cost:	528
<b>Maximum Estimated Cost:</b>	<b>1416</b>
Record Number	105
Priority:	

**Full Rec** Provide one intermediate handrail for each 88 inches of stairway width. Space intermediate handrails equally across the entire width of the stairway.



**Facility Name: Ellen Ochoa Learning Center**

**Doors**

**Finding:** The bottom 10 inches of the gate does not provide a smooth, uninterrupted surface, or panel to allow the door to be opened by a wheelchair footrest without creating a trap or hazardous condition.

**Alternative Rec: (Where Available) \***



Gate from Florence Avenue Parking to School

**Full Rec** Install a panel or replace the gate to provide a smooth, uninterrupted surface for the bottom 10 inches of the door.

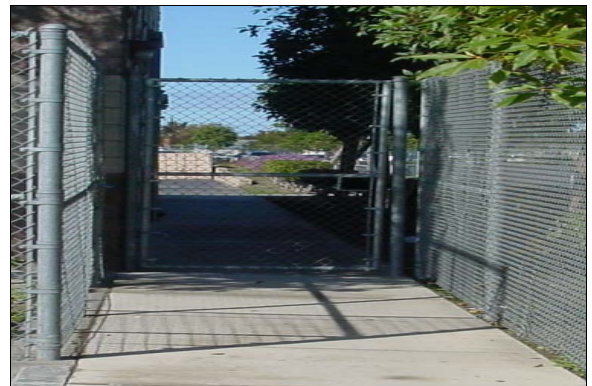
Citation: CBC 1133B.2.6

Minimum Quantity: 1  
 Maximum Quantity: 1  
 Unit: Custom  
 Minimum Estimated Cost: 0  
**Maximum Estimated Cost: 0**  
 Record Number 117  
 Priority:

**Doors**

**Finding:** The hardware on the gate is not accessible.

**Alternative Rec: (Where Available) \***



Gate from Florence Avenue Parking to School

**Full Rec** Replace the existing gate hardware with accessible hardware (see ADAAG 4.13.9).

Citation: ADAAG 4.13.9

Minimum Quantity: 1  
 Maximum Quantity: 1  
 Unit: Each  
 Minimum Estimated Cost: 834  
**Maximum Estimated Cost: 834**  
 Record Number 118  
 Priority:

# Facility Name: Ellen Ochoa Learning Center

## Doors

**Finding:** The bottom 10 inches of the gate does not provide a smooth, uninterrupted surface, or panel to allow the door to be opened by a wheelchair footrest without creating a trap or hazardous condition.

**Alternative Rec:** \*  
(Where Available)



Gate from MPR Parking Lot to School

**Full Rec** Install a panel or replace the gate to provide a smooth, uninterrupted surface for the bottom 10 inches of the door.

Citation: CBC 1133B.2.6

Minimum Quantity: 1  
 Maximum Quantity: 1  
 Unit: Custom  
 Minimum Estimated Cost: 0  
**Maximum Estimated Cost: 0**  
 Record Number: 119  
 Priority:

## Doors

**Finding:** The hardware on the gate is not accessible.

**Alternative Rec:** \*  
(Where Available)



Gate from MPR Parking Lot to School

**Full Rec** Replace the existing gate hardware with accessible hardware (see ADAAG 4.13.9).

Citation: ADAAG 4.13.9

Minimum Quantity: 1  
 Maximum Quantity: 1  
 Unit: Each  
 Minimum Estimated Cost: 834  
**Maximum Estimated Cost: 834**  
 Record Number: 120  
 Priority:

# Facility Name: Ellen Ochoa Learning Center

## Doors

**Finding:** There is less than 48 inches of clearance between the entrance door to the nurses office and the unisex restroom door in the nurses office.

**Alternative Rec:** \*  
**Rec:**  
**(Where Available)**



Nurses Office

**Full Rec** Reverse the entrance door swing or provide at least 48 inches of clear space between doors in a series.

Citation: CBC 1133B.2.4.4; ADAAG 4.13.7

Minimum Quantity:	1
Maximum Quantity:	1
Unit:	Each
Minimum Estimated Cost:	18
<b>Maximum Estimated Cost:</b>	<b>18</b>
Record Number	134
Priority:	

## Doors

**Finding:** There is less than 18 inches of latch side clearance from the pull side of the interior entrance door to the nurses office.

**Alternative Rec:** \*  
**Rec:**  
**(Where Available)**



Nurses Office

**Full Rec** Provide at least 18 inches of latch side clearance at the entrance door from the pull side (see ADAAG 4.13.6 and Figure 25).

Citation: ADAAG 4.13.6; CBC 1133B.2.4.2

Minimum Quantity:	1
Maximum Quantity:	1
Unit:	Custom
Minimum Estimated Cost:	0
<b>Maximum Estimated Cost:</b>	<b>0</b>
Record Number	135
Priority:	

## Facility Name: Ellen Ochoa Learning Center

### Visual and Audible Communications

**Finding:** There is no directional signage to the classrooms or other common use areas.

**Alternative Rec:** \*  
(Where Available)



Directional Signage

**Full Rec** Install directional signage to each common area complying with CBC 1117B.5 and ADAAG 4.30.

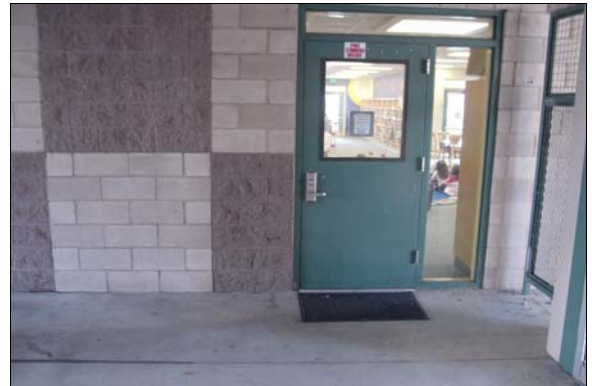
Citation: CBC 1117B.5; ADAAG 4.30

Minimum Quantity:	1
Maximum Quantity:	1
Unit:	Each
Minimum Estimated Cost:	58
<b>Maximum Estimated Cost:</b>	<b>58</b>
Record Number	110
Priority:	

### Visual and Audible Communications

**Finding:** The library does not have accessible signage mounted on the wall adjacent to the latch side of the door.

**Alternative Rec:** \*  
(Where Available)



Library

**Full Rec** Install signage centered at 60 inches above the finished floor on the wall adjacent to the latch side of each entry doorway stating "ROOM" with raised UPPERCASE letters between 5/8 inch and 2 inches in height and Grade 2 Braille characters. The sign shall comply with the finish and contrast requirements set forth in CBC 1117B.5 and ADAAG 4.30.5. Signage should be located where a person may approach within three inches of the sign without encountering protruding objects or standing within the swing of the door.

Citation: CBC 1117B.5; ADAAG 4.30

Minimum Quantity:	1
Maximum Quantity:	1
Unit:	Each
Minimum Estimated Cost:	58
<b>Maximum Estimated Cost:</b>	<b>58</b>
Record Number	109
Priority:	



## Facility Name: Ellen Ochoa Learning Center

### Visual and Audible Communications

**Finding:** The main entrance does not have accessible signage mounted on the wall adjacent to the latch side of the door.

**Alternative Rec:** \*  
**Rec:**  
**(Where Available)**



Main Entrance to the Office

**Full Rec** Install signage centered at 60 inches above the finished floor on the wall adjacent to the latch side of the entry doorway stating ENTRANCE from the outside and EXIT from the inside, with raised UPPERCASE letters between 5/8 inch and 2 inches in height and Grade 2 Braille characters. The sign shall comply with the finish and contrast requirements set forth in CBC 1117B.5 and ADAAG 4.30.5. Signage should be located where a person may approach within three inches of the sign without encountering protruding objects or standing within the swing of the door.

Citation: CBC 1117B.5; ADAAG 4.30

Minimum Quantity:	1
Maximum Quantity:	1
Unit:	Each
Minimum Estimated Cost:	58
<b>Maximum Estimated Cost:</b>	<b>58</b>
Record Number	106
Priority:	

### Visual and Audible Communications

**Finding:** The main office does not have accessible signage mounted on the wall adjacent to the latch side of the door.

**Alternative Rec:** \*  
**Rec:**  
**(Where Available)**



Main Entrance to the Office

**Full Rec** Install signage centered at 60 inches above the finished floor on the wall adjacent to the latch side of each entry doorway stating "ROOM" with raised UPPERCASE letters between 5/8 inch and 2 inches in height and Grade 2 Braille characters. The sign shall comply with the finish and contrast requirements set forth in CBC 1117B.5 and ADAAG 4.30.5. Signage should be located where a person may approach within three inches of the sign without encountering protruding objects or standing within the swing of the door.

Citation: CBC 1117B.5; ADAAG 4.30

Minimum Quantity:	1
Maximum Quantity:	1
Unit:	Each
Minimum Estimated Cost:	58
<b>Maximum Estimated Cost:</b>	<b>58</b>
Record Number	108
Priority:	

## Facility Name: Ellen Ochoa Learning Center

### Visual and Audible Communications

**Finding:** There is not sufficient clear floor space provided in front of the pay telephone in the nurses office.

**Alternative Rec:**  
(Where Available)



Nurses Office

**Full Rec** Provide sufficient clear floor space of at least 30 inches wide and 48 inches long in front of pay telephone.

Citation: CBC 1117B.2.2; CBC 1117B.2.3; ADAAG 4.31.2

Minimum Quantity:	1
Maximum Quantity:	1
Unit:	None Selected
Minimum Estimated Cost:	0
<b>Maximum Estimated Cost:</b>	<b>0</b>
Record Number	140
Priority:	

### Restrooms

**Finding:** There is signage on the latch side of the entry to the restroom. The signage does not have a raised gender use symbol or a raised ISA symbol.

**Alternative Rec:** \*  
(Where Available)



Boys Restroom Across from Room 114

**Full Rec** Post signage centered 60 inches above the ground surface on the latch side of the entrance door identifying the restroom as accessible. Signage shall include Braille and raised lettering, the gender or unisex use symbol and the ISA symbol.

Citation: CBC 1115B.5; ADAAG 4.1.6; ADAAG 4.1.2(7); ADAAG 4.1.6(3)(e); ADAAG 4.30

Minimum Quantity:	1
Maximum Quantity:	1
Unit:	Each
Minimum Estimated Cost:	58
<b>Maximum Estimated Cost:</b>	<b>58</b>
Record Number	141
Priority:	

# Facility Name: Ellen Ochoa Learning Center

## Restrooms

**Finding:** The height of the side and back grab bar in the restroom is less than 33 inches above the finished floor.

**Alternative Rec:** \*  
(Where Available)



Boys Restroom Across from Room 114

**Full Rec** Remount the side and back grab bar so the height of the gripping surface is centered at 33 inches above the finished floor. Grab bars must be able to support a point load of at least 250 pounds and shall be less than the allowable shear stress of the grab bar material.

Citation: CBC 1115B.8.1; ADAAG 4.26

Minimum Quantity:	1
Maximum Quantity:	1
Unit:	Each
Minimum Estimated Cost:	448
<b>Maximum Estimated Cost:</b>	<b>448</b>
Record Number	142
Priority:	

## Restrooms

**Finding:** The distance from the center of the toilet to the nearest side wall is greater than 18 inches.

**Alternative Rec:** \*  
(Where Available)



Boys Restroom Across from Room 114

**Full Rec** Relocate the toilet so that the distance from the centerline of the toilet to the nearest side wall is exactly 18 inches (see ADAAG Figure 28).

Citation: CBC 1115B.7.1.3 ADAAG 4.17.3

Minimum Quantity:	1
Maximum Quantity:	1
Unit:	Each
Minimum Estimated Cost:	1143
<b>Maximum Estimated Cost:</b>	<b>1143</b>
Record Number	143
Priority:	

# Facility Name: Ellen Ochoa Learning Center

## Restrooms

**Finding:** The door in the accessible toilet compartment does not have appropriate accessible hardware and is not self closing.

**Alternative Rec:** \*  
**(Where Available)**



Boys Restroom Across from Room 114

**Full Rec** Install a loop or U-shaped handle immediately below the latch hardware on the door (see CBC 1115B.7.1.3 and ADAAG 4.13.9). Lever-operated or push-type mechanisms may also be used. The latch shall be flip-over style, sliding or other hardware not requiring grasping or twisting.

Citation: ADAAG A4.17.5

Minimum Quantity:	1
Maximum Quantity:	1
Unit:	Each
Minimum Estimated Cost:	269
<b>Maximum Estimated Cost:</b>	<b>269</b>
Record Number	146
Priority:	

## Restrooms

**Finding:** There is signage on the latch side of the entry to the restroom. The signage does not have a raised gender use symbol or a raised ISA symbol.

**Alternative Rec:** \*  
**(Where Available)**



Girls Restroom Across from Room 114

**Full Rec** Post signage centered 60 inches above the ground surface on the latch side of the entrance door identifying the restroom as accessible. Signage shall include Braille and raised lettering, the gender or unisex use symbol and the ISA symbol.

Citation: CBC 1115B.5; ADAAG 4.1.6; ADAAG 4.1.2(7); ADAAG 4.1.6(3)(e); ADAAG 4.30

Minimum Quantity:	1
Maximum Quantity:	1
Unit:	Each
Minimum Estimated Cost:	58
<b>Maximum Estimated Cost:</b>	<b>58</b>
Record Number	144
Priority:	



# Facility Name: Ellen Ochoa Learning Center

## Restrooms

**Finding:** The door in the accessible toilet compartment does not have appropriate accessible hardware.

**Alternative Rec:** \*  
**Rec:**  
**(Where Available)**



Girls Restroom Across from Room 114

**Full Rec** Install a loop or U-shaped handle immediately below the latch hardware on the door (see CBC 1115B.7.1.3 and ADAAG 4.13.9). Lever-operated or push-type mechanisms may also be used. The latch shall be flip-over style, sliding or other hardware not requiring grasping or twisting.

Citation: CBC 1115B.7.1.3; ADAAG 4.13.9

Minimum Quantity:	1
Maximum Quantity:	1
Unit:	Each
Minimum Estimated Cost:	189
<b>Maximum Estimated Cost:</b>	<b>189</b>
Record Number	145
Priority:	

## Restrooms

**Finding:** The height of the side and back grab bar in the restroom is less than 33 inches above the finished floor.

**Alternative Rec:** \*  
**Rec:**  
**(Where Available)**



Girls Restroom Across from Room 114

**Full Rec** Remount the side and back grab bar so the height of the gripping surface is centered at 33 inches above the finished floor. Grab bars must be able to support a point load of at least 250 pounds and shall be less than the allowable shear stress of the grab bar material.

Citation: CBC 1115B.8.1; ADAAG 4.26

Minimum Quantity:	1
Maximum Quantity:	1
Unit:	Each
Minimum Estimated Cost:	448
<b>Maximum Estimated Cost:</b>	<b>448</b>
Record Number	147
Priority:	

# Facility Name: Ellen Ochoa Learning Center

## Restrooms

**Finding:** The distance from the center of the toilet to the nearest side wall is greater than 18 inches.

**Alternative Rec:** \*  
**(Where Available)**



Girls Restroom Across from Room 114

**Full Rec** Relocate the toilet so the distance from the centerline of the toilet to the nearest side wall is exactly 18 inches (see ADAAG Figure 28).

Citation: CBC 1115B.7.1.3 ADAAG 4.17.3

Minimum Quantity:	1
Maximum Quantity:	1
Unit:	Each
Minimum Estimated Cost:	1143
<b>Maximum Estimated Cost:</b>	<b>1143</b>
Record Number	148
Priority:	

## Restrooms

**Finding:** The coat hook on the entrance door is mounted greater than 48 inches above the floor.

**Alternative Rec:** \*  
**(Where Available)**



Staff Mens Restroom in the Main Office

**Full Rec** Relocate the coat hook to a height no greater than 48 inches above the floor.

Citation: CBC 1115B.9.2; ADAAG A4.27

Minimum Quantity:	1
Maximum Quantity:	1
Unit:	Each
Minimum Estimated Cost:	277
<b>Maximum Estimated Cost:</b>	<b>277</b>
Record Number	124
Priority:	

# Facility Name: Ellen Ochoa Learning Center

## Restrooms

**Finding:** The height of the side and back grab bar is less than 33 inches above the finished floor. The side grab bar does not extend 54 inches from the back wall.

**Alternative Rec:** \*  
**(Where Available)**



Staff Mens Restroom in the Main Office

**Full Rec** Remount the side and back grab bar in the stall designated to be accessible in the restroom so that the height of the gripping surface is centered at 33 inches above finished floor. The side grab bar must extend at least 54 inches from the back wall.

Citation: CBC 1115B.8.1; ADAAG 4.26

Minimum Quantity:	1
Maximum Quantity:	1
Unit:	Each
Minimum Estimated Cost:	448
<b>Maximum Estimated Cost:</b>	<b>448</b>
Record Number	125
Priority:	

## Restrooms

**Finding:** The distance from the center of the toilet to the nearest side wall is greater than 18 inches.

**Alternative Rec:** \*  
**(Where Available)**



Staff Mens Restroom in the Main Office

**Full Rec** Relocate the toilet so that the distance from the centerline of the toilet to the nearest side wall is exactly 18 inches (see ADAAG Figure 28).

Citation: CBC 1115B.7.1.3 ADAAG 4.17.3

Minimum Quantity:	1
Maximum Quantity:	1
Unit:	Each
Minimum Estimated Cost:	1143
<b>Maximum Estimated Cost:</b>	<b>1143</b>
Record Number	126
Priority:	

# Facility Name: Ellen Ochoa Learning Center

## Restrooms

**Finding:** The height of the controls and operating mechanisms for the soap dispenser is greater than 40 inches in height.

**Alternative Rec:** \*  
(Where Available)



Staff Mens Restroom in the Main Office

**Full Rec** Relocate the soap dispenser to a maximum height of 40 inches for all the controls and operating mechanisms (see CBC 1115B.9.2).

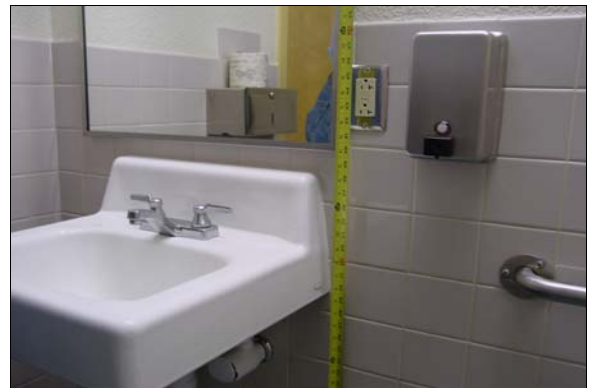
Citation: CBC 1115B.9.2; ADAAG A4.27

Minimum Quantity:	1
Maximum Quantity:	1
Unit:	Each
Minimum Estimated Cost:	277
<b>Maximum Estimated Cost:</b>	<b>277</b>
Record Number	127
Priority:	

## Restrooms

**Finding:** The bottom edge of the reflecting surface of the mirror is greater than 40 inches above the finished floor.

**Alternative Rec:** \*  
(Where Available)



Staff Mens Restroom in the Main Office

**Full Rec** Lower the mirror so the bottom edge of the reflecting surface is no higher than 40 inches above the finished floor and the topmost portion of the reflecting surface extends at least 74 inches above the finished floor (see ADAAG A4.19.6). A single, full-length mirror is recommended since it can accommodate all people. Make certain to provide a minimum clear floor space in front of the mirror of 30 inches in width and 48 inches in length.

Citation: ADAAG A4.19.6; CBC 1115B.9.1.2; ADAAG 4.19.6

Minimum Quantity:	1
Maximum Quantity:	1
Unit:	Each
Minimum Estimated Cost:	291
<b>Maximum Estimated Cost:</b>	<b>291</b>
Record Number	128
Priority:	



# Facility Name: Ellen Ochoa Learning Center

## Restrooms

**Finding:** There is signage on the latch side of the entry door of the restroom. The signage does not have raised pictograms or ISA symbol.

**Alternative Rec:** \*  
**Rec:**  
**(Where Available)**



Staff Unisex Restroom in the Staff Lounge

**Full Rec** Post signage centered 60 inches above the ground surface on the latch side of the entrance door identifying the restroom as accessible. Signage shall include Braille and raised lettering, the gender or unisex use symbol and the ISA symbol. Post Title 24 gender use signage on the door @ 60" o.c. a.f.f.

**Citation:** CBC 1115B.5; ADAAG 4.1.6; ADAAG 4.1.2(7); ADAAG 4.1.6(3)(e); ADAAG 4.30

Minimum Quantity:	1
Maximum Quantity:	1
Unit:	Each
Minimum Estimated Cost:	58
<b>Maximum Estimated Cost:</b>	<b>58</b>
Record Number	149
Priority:	

## Restrooms

**Finding:** The door opening force for the interior entrance door to the restroom is greater than 5 pounds.

**Alternative Rec:** \*  
**Rec:**  
**(Where Available)**



Staff Unisex Restroom in the Staff Lounge

**Full Rec** Adjust the closer on the interior entrance door to the restroom to a maximum door opening force of 5 pounds (see CBC 1133B.2.5.1 and ADAAG 4.13.11).

**Citation:** CBC 1133B.2.5.1; ADAAG 4.13.11

Minimum Quantity:	1
Maximum Quantity:	1
Unit:	Each
Minimum Estimated Cost:	5
<b>Maximum Estimated Cost:</b>	<b>5</b>
Record Number	150
Priority:	

# Facility Name: Ellen Ochoa Learning Center

## Restrooms

**Finding:** The height of the side and back grab bar in the restroom is greater than 33 inches above the finished floor. The side grab bar does not extend 54 inches from the back wall.

**Alternative Rec:** \*  
(Where Available)



Staff Unisex Restroom in the Staff Lounge

**Full Rec** Remount the side and back grab bar in the restroom so that the height of the gripping surface is centered at 33 inches above the finished floor. The side grab bar must extend 54 inches from the back wall.

Citation: CBC 1115B.8.1; ADAAG 4.26

Minimum Quantity:	1
Maximum Quantity:	1
Unit:	Each
Minimum Estimated Cost:	448
<b>Maximum Estimated Cost:</b>	<b>448</b>
Record Number	151
Priority:	

## Restrooms

**Finding:** The location of the toilet paper dispenser in the restroom is not within 12 inches of the front edge of the toilet and interferes with the use of the side grab bar.

**Alternative Rec:** \*  
(Where Available)



Staff Unisex Restroom in the Staff Lounge

**Full Rec** Remount the toilet paper dispenser so it is within 12 inches from the front edge of the toilet (see CBC 1115B.9.3 and ADAAG Figure 29(b)). Toilet paper dispensers must allow continuous paper flow and shall not interfere with the use of the side grab bar.

Citation: CBC 1115B.9.3; ADAAG 4.16.6

Minimum Quantity:	1
Maximum Quantity:	1
Unit:	Each
Minimum Estimated Cost:	277
<b>Maximum Estimated Cost:</b>	<b>277</b>
Record Number	152
Priority:	

## Facility Name: Ellen Ochoa Learning Center

### Restrooms

**Finding:** The coat hook on the entrance door is mounted greater than 48 inches above the floor.

**Alternative Rec:** \*  
(Where Available)



Staff Unisex Restroom in the Staff Lounge

**Full Rec** Relocate the coat hook to a height no greater than 48 inches above the floor.

Citation: CBC 1115B.9.2; ADAAG A4.27

Minimum Quantity:	1
Maximum Quantity:	1
Unit:	Each
Minimum Estimated Cost:	277
<b>Maximum Estimated Cost:</b>	<b>277</b>
Record Number	153
Priority:	

### Restrooms

**Finding:** The height of the controls and operating mechanisms for the soap dispenser is greater than 40 inches in height.

**Alternative Rec:** \*  
(Where Available)



Staff Unisex Restroom in the Staff Lounge

**Full Rec** Relocate the soap dispenser to a maximum height of 40 inches for all the controls and operating mechanisms (see CBC 1115B.9.2).

Citation: CBC 1115B.9.2; ADAAG A4.27

Minimum Quantity:	1
Maximum Quantity:	1
Unit:	Each
Minimum Estimated Cost:	277
<b>Maximum Estimated Cost:</b>	<b>277</b>
Record Number	154
Priority:	

# Facility Name: Ellen Ochoa Learning Center

## Restrooms

**Finding:** The height of the side and back grab bar is less than 33 inches above the finished floor.

**Alternative Rec:** \*  
**(Where Available)**



Staff Womens Restroom in the Main Office

**Full Rec** Remount the side and back grab bar in the restroom so that the height of the gripping surface is centered at 33 inches above the finished floor. The side grab bar must extend at least 54 inches from the back wall.

Citation: CBC 1115B.8.1; ADAAG 4.26

Minimum Quantity:	1
Maximum Quantity:	1
Unit:	Each
Minimum Estimated Cost:	448
<b>Maximum Estimated Cost:</b>	<b>448</b>
Record Number	129
Priority:	

## Restrooms

**Finding:** The distance from the center of the toilet to the nearest side wall is greater than 18 inches.

**Alternative Rec:** \*  
**(Where Available)**



Staff Womens Restroom in the Main Office

**Full Rec** Relocate the toilet so that the distance from the centerline of the toilet to the nearest side wall is exactly 18 inches (see ADAAG Figure 28).

Citation: CBC 1115B.7.1.3 ADAAG 4.17.3

Minimum Quantity:	1
Maximum Quantity:	1
Unit:	Each
Minimum Estimated Cost:	1143
<b>Maximum Estimated Cost:</b>	<b>1143</b>
Record Number	130
Priority:	



# Facility Name: Ellen Ochoa Learning Center

## Restrooms

**Finding:** There is less than 12 inches of clearance on the latch side of the entrance door to the restroom from the push side.

**Alternative Rec:** \*  
**Rec:**  
**(Where Available)**



Staff Womens Restroom in the Main Office

**Full Rec** Provide at least 12 inches of latch side clearance at the entrance door to the restroom from the push side (see ADAAG 4.13.6 and Figure 25). Otherwise, install an automatic door opening device to the primary entrance complying with ADAAG 4.13.12 and ANSI/BHMA A156.10, 1985, standards.

Citation: ADAAG 4.13.6

Minimum Quantity: 1  
Maximum Quantity: 1  
Unit: Each  
Minimum Estimated Cost: 1921  
**Maximum Estimated Cost: 0**  
Record Number 131  
Priority:

## Restrooms

**Finding:** The bottom edge of the reflecting surface of the mirror is greater than 40 inches above the finished floor.

**Alternative Rec:** \*  
**Rec:**  
**(Where Available)**



Staff Womens Restroom in the Main Office

**Full Rec** Lower the mirror so the bottom edge of the reflecting surface is no higher than 40 inches above the finished floor and the topmost portion of the reflecting surface extends at least 74 inches above the finished floor (see ADAAG A4.19.6). A single, full-length mirror is recommended since it can accommodate all people. Make certain to provide a minimum clear floor space in front of the mirror of 30 inches in width and 48 inches in length.

Citation: ADAAG A4.19.6; CBC 1115B.9.1.2; ADAAG 4.19.6

Minimum Quantity: 1  
Maximum Quantity: 1  
Unit: Each  
Minimum Estimated Cost: 291  
**Maximum Estimated Cost: 291**  
Record Number 132  
Priority:

# Facility Name: Ellen Ochoa Learning Center

## Restrooms

**Finding:** The height of the controls and operating mechanisms for the soap dispenser is greater than 40 inches in height.

**Alternative Rec:** \*  
(Where Available)



Staff Womens Restroom in the Main Office

**Full Rec** Relocate the soap dispenser to a maximum height of 40 inches for all the controls and operating mechanisms (see CBC 1115B.9.2).

Citation: CBC 1115B.9.2; ADAAG A4.27

Minimum Quantity:	1
Maximum Quantity:	1
Unit:	Each
Minimum Estimated Cost:	277
<b>Maximum Estimated Cost:</b>	<b>277</b>
Record Number	133
Priority:	

## Restrooms

**Finding:** The coat hook on the entrance door is mounted greater than 48 inches above the floor.

**Alternative Rec:** \*  
(Where Available)



Staff Womens Restroom in the Main Office

**Full Rec** Relocate the coat hook to a height no greater than 48 inches above the floor.

Citation: CBC 1115B.9.2; ADAAG A4.27

Minimum Quantity:	1
Maximum Quantity:	1
Unit:	Each
Minimum Estimated Cost:	277
<b>Maximum Estimated Cost:</b>	<b>277</b>
Record Number	155
Priority:	

# Facility Name: Ellen Ochoa Learning Center

## Restrooms

**Finding:** There is no signage indicating accessibility on the latch side of the entry door of the restroom. There is no Title 24 gender use signage on the entrance door.

**Alternative Rec: \***  
**Rec:**  
**(Where Available)**



Unisex Restroom in the Nurses Office

**Full Rec** Post signage centered 60 inches above the ground surface on the latch side of the entrance door identifying the restroom as accessible. Signage shall include Braille and raised lettering, the gender or unisex use symbol and the ISA symbol. Post Title 24 gender use signage on the door @ 60" o.c. a.f.f.

Citation: CBC 1115B.5; ADAAG 4.1.6; ADAAG 4.1.2(7); ADAAG 4.1.6(3)(e); ADAAG 4.30

Minimum Quantity: 1  
Maximum Quantity: 1  
Unit: Each  
Minimum Estimated Cost: 58  
**Maximum Estimated Cost: 58**  
Record Number 136  
Priority:

## Restrooms

**Finding:** The door opening force for the interior entrance door to the restroom is greater than 5 pounds.

**Alternative Rec: \***  
**Rec:**  
**(Where Available)**



Unisex Restroom in the Nurses Office

**Full Rec** Adjust the closer on the interior entrance door to the restroom to a maximum door opening force of 5 pounds (see CBC 1133B.2.5.1 and ADAAG 4.13.11).

Citation: CBC 1133B.2.5.1; ADAAG 4.13.11

Minimum Quantity: 1  
Maximum Quantity: 1  
Unit: Each  
Minimum Estimated Cost: 5  
**Maximum Estimated Cost: 5**  
Record Number 137  
Priority:

# Facility Name: Ellen Ochoa Learning Center

## Restrooms

**Finding:** The height of the side and back grab bar is greater than 33 inches above the finished floor.

**Alternative Rec:** \*  
**Rec:**  
**(Where Available)**



Unisex Restroom in the Nurses Office

**Full Rec** Remount the side and back grab bar so the height of the gripping surface is centered at 33 inches above finished floor. Grab bars must be able to support a point load of at least 250 pounds and shall be less than the allowable shear stress of the grab bar material.

Citation: CBC 1115B.8.1; ADAAG 4.26

Minimum Quantity:	1
Maximum Quantity:	1
Unit:	Each
Minimum Estimated Cost:	448
<b>Maximum Estimated Cost:</b>	<b>448</b>
Record Number	138
Priority:	

## Restrooms

**Finding:** The knee clearance space under the lavatory is less than 29 inches.

**Alternative Rec:** \*  
**Rec:**  
**(Where Available)**



Unisex Restroom in the Nurses Office

**Full Rec** Raise or replace the lavatory to provide at least 29 inches of clear knee space between the finished floor and bottom of the lavatory apron. Make sure to provide at least 27 inches at 8 inches under the apron (see ADAAG 4.19.2).

Citation: ADAAG 4.19.2

Minimum Quantity:	1
Maximum Quantity:	1
Unit:	Each
Minimum Estimated Cost:	1286
<b>Maximum Estimated Cost:</b>	<b>1286</b>
Record Number	139
Priority:	