

# Accessibility Site Survey of Selected Items For Title 24 of the California Building Code



Cornerstone Preparatory  
7651 South Central Avenue  
Los Angeles, CA 90001

Certificate of Occupancy: 7-Change of Use

This report contains sample findings and is **NOT** intended to be a comprehensive site inspection and is **NOT** intended to be a complete report.

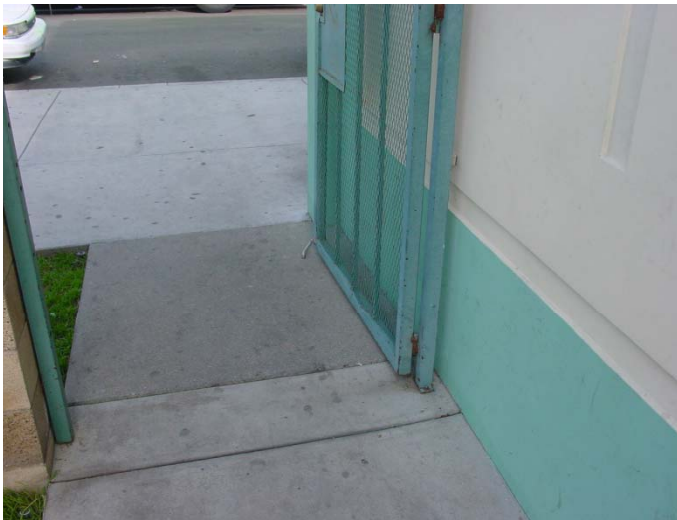
December 17, 2009



### **Gate**

No signage

Does not have enough latch side clearance



### **Gate**

Bottom 10 inches of entrance gate not smooth

Hardware not accessible



### **Path of Travel**

Open tree wells



### Main Entrance

No signage to main entrance of Cornerstone Prep



### Parking

Non-compliant parking



### Parking

Non-compliant parking  
Faded striping



## Parking

Non-compliant parking  
Tables block path of travel  
ISA not 36 inches by 36 inches



## Parking

Van access aisle only 92 inches  
Standard access aisle only 56 ½ inches



## Tables

Tables not compliant by design  
Tables block head access aisle



## Platform Lift

Platform lift not compliant



## Signage

Non-compliant signage



## Signage

Signage on door not compliant due to lack of contrast of sign and door



## **Gymnasium**

No accessible seating



## **Restroom**

Pipes not wrapped  
Only 26 inches of knee clearance



## **Dining Area**

Tables not accessible by design