

# Accessibility Site Survey of Selected Items For Title 24 of the California Building Code

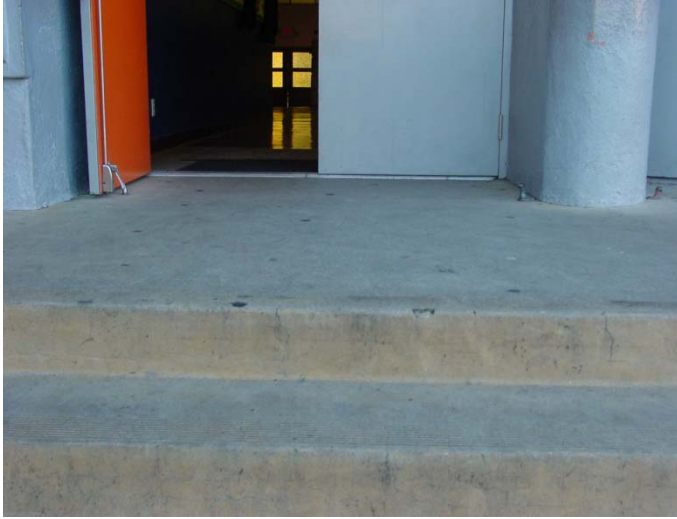


Kipp Academy of Opportunity  
7019 South Van Ness Avenue  
Los Angeles, CA 90043

Certificate of Occupancy: 8-Existing School

This report contains sample findings and is **NOT** intended to be a comprehensive site inspection and is **NOT** intended to be a complete report.

January 27, 2010



### **Main Entrance**

Stair access only

No handrails on stairs

Bottom 10 inches of the door not smooth due to door stop



### **Path of Travel**

Path of travel from the public right of way does not have an accessible route

No signage from the public right of way



### **Path of Travel**

Change in elevation exceeds 3 inches



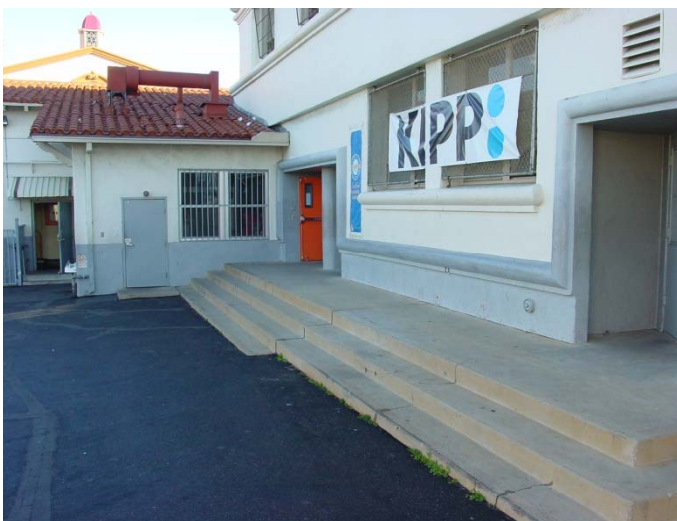
### **Path of Travel**

No accessible route  
Dirt and grass



### **Path of Travel**

Change in elevation exceeds 2 inches



### **Path of Travel**

No accessible route to school entrance





### **Drinking Fountains**

No accessible drinking fountains in school



### **Door to Main Entrance**

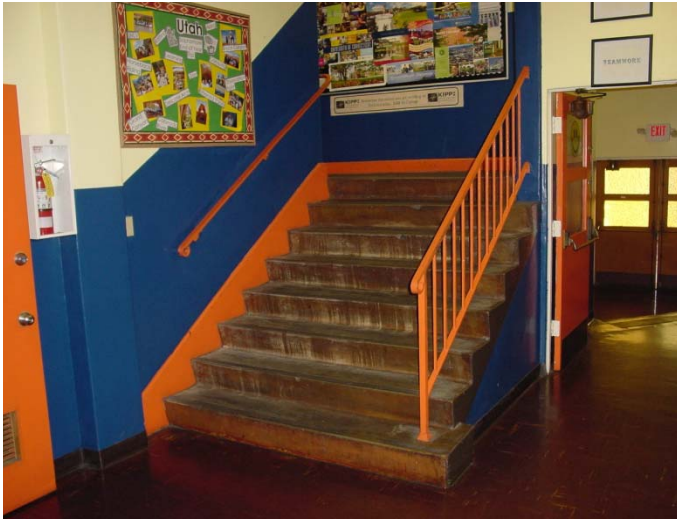
No signage

Bottom 10 inches of the door not smooth due to door stop



### **Doors**

Door closures too low



## Stairs

Handrails not compliant  
No handrail extensions



## Drinking Fountain

Change in elevation to drinking fountain



## Signage

Signage to newly remodeled restroom does not have a contrast of the triangle and circle



### Restroom

Pipes not wrapped at newly remodeled accessible restroom



### Restroom

Soap and towel dispenser in newly remodeled restroom have a height greater than 40 inches



### Restroom

Grab bars in newly remodeled restroom are at 38 1/2 inches instead of 33 inches



### **Path of Travel**

Stair access between office level and computer lab



### **Path of Travel**

Stair only access to the stage in the multi-purpose room  
No vertical access



### **Dining Area**

No accessible seating in the multi-purpose room  
Tray slide higher than 34 inches