

Accessibility Site Survey of Selected Items
For
Title 24 of the California Building Code



Milagro Charter Elementary School
1855 North Main Street
Los Angeles, CA 90031

Certificate of Occupancy: 7-Change of Use

This report contains sample findings and is **NOT** intended to be a comprehensive site inspection and is **NOT** intended to be a complete report.

January 28, 2010



Doors

No signage (typical condition for classroom doors)



Path of Travel

Fire extinguisher is a protruding object on the path of travel



Restroom

Only 19 inches in the direction of the door swing to lavatory



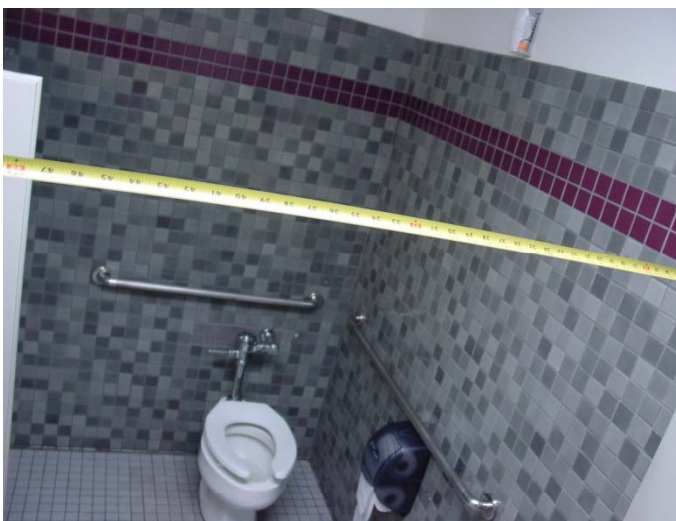
Restroom

Pipes not wrapped
Adult standards for elementary site



Restroom

Non-compliant hardware on paper towel dispenser



Restroom

Accessible compartment only 50 inches wide



Parking

No truncated domes



Path of Travel

Path of travel from the public right of way is not compliant

Bottom 10 inches of gate not smooth

Non-compliant controls on exterior of gate



Parking

Van Access aisle only 92 inches



Parking

International Symbol of Accessibility (ISA) is greater than 36 inches by 36 inches



Parking

Accessible parking only 103 inches wide (108 required)



Dining Area

No accessible tables



Playground

Playground not accessible

Transfer point not on shortest accessible route



Ramp

Security grating interferes with handrails