

**Accessibility Site Survey of Selected Items
For
Title 24 of the California Building Code**



Crescendo Charter School/Conservatory
4900 South Western Avenue
Los Angeles, CA 90062

Certificate of Occupancy: 8-Existing School

This report contains sample findings and is **NOT** intended to be a comprehensive site inspection and is **NOT** intended to be a complete report.

January 27, 2010



Restroom

- No signage
- Door swings in
- No 60 inches of clear space



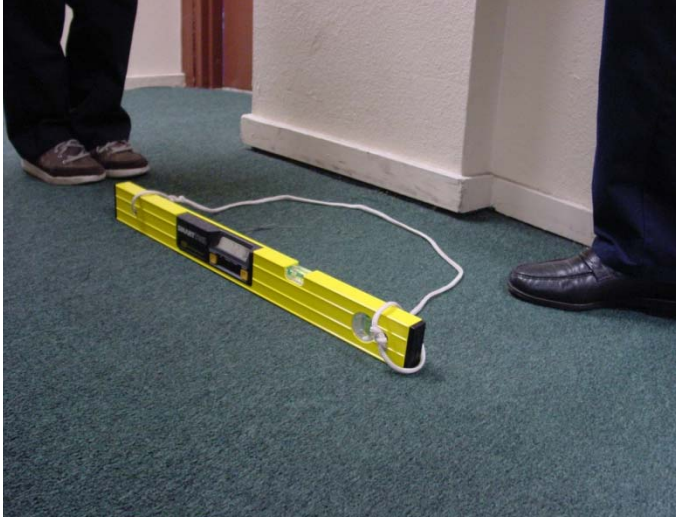
Restroom

- Non-compliant grab bars
- No 60 inch turning radius



Restroom

- Soap, mirrors and paper towels too high
- No 60 inch turning radius



Path of Travel

7% slope outside of classroom



Signage

No contrast of triangle and circle on unisex gender symbol



Restroom

Adult standards

Grab bar greater than 12 inches from the wall

No 60 inches

Door swings into clear floor space



Path of Travel

Interior ramp too steep
Non-compliant handrails
Non-compliant landing



Doors

Beveled $\frac{3}{4}$ inch threshold
Bottom 10 inch not smooth from the push side of the door
No 80 inch door height



Stage

No vertical access to stage



Restroom

Non-compliant restroom

Children's and adult standards mixed

Mirror, paper towel and soap too high



Doors

Non-compliant signage (typical throughout)



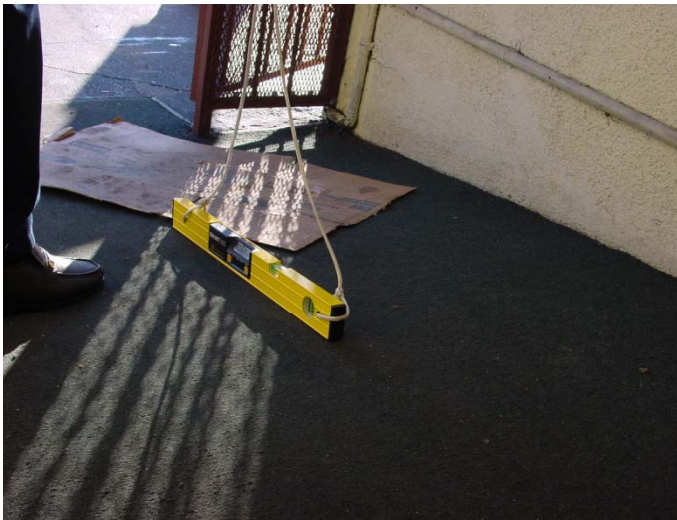
Restroom

Toilet paper dispenser interferes with use of side grab bar



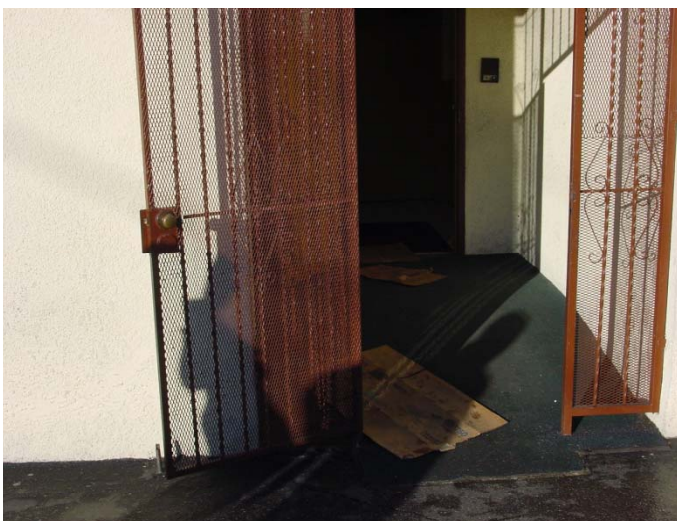
Drinking Fountain

Drinking fountain is a protruding object



Path of Travel

Main entrance does not have a level landing



Path of Travel

Main entrance has no signage
Non-compliant hardware
No level landing



Path of Travel

No accessible route from the public right of way



Parking

No warning signage

No parking signage

No head aisle