

# Accessibility Site Survey of Selected Items For Title 24 of the California Building Code



ICEF Vista Elementary Academy  
4471 Inglewood Boulevard  
Los Angeles, CA 90066

Certificate of Occupancy: 8-Existing School

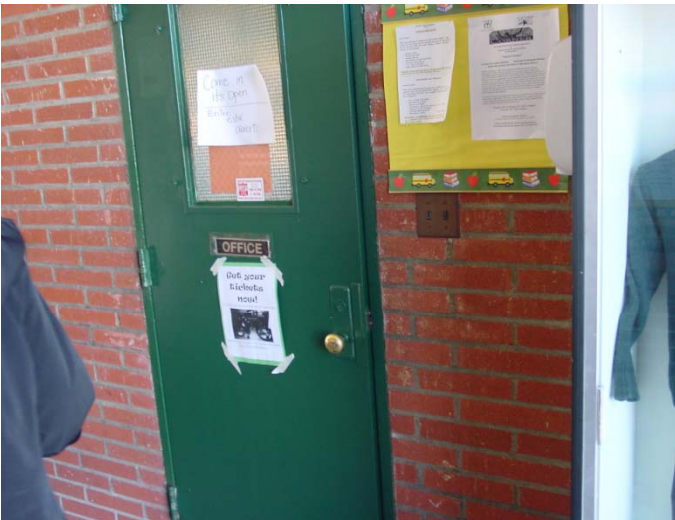
This report contains sample findings and is **NOT** intended to be a comprehensive site inspection and is **NOT** intended to be a complete report.

January 27, 2010



## Main Entrance

Step to main entrance



## Main Office

No signage

Non-accessible hardware

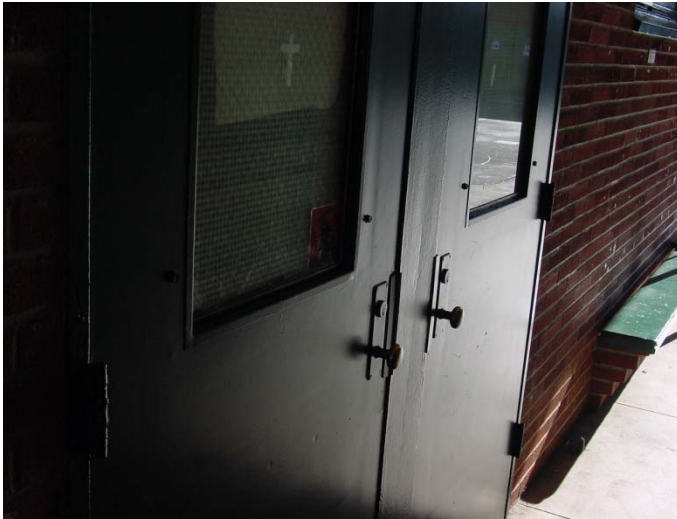


## Door

Typical non-compliant door thresholds

No signage

Non-accessible door hardware



### **Door**

Door not wide enough  
Non-accessible hardware



### **Path of Travel**

No accessible route to school



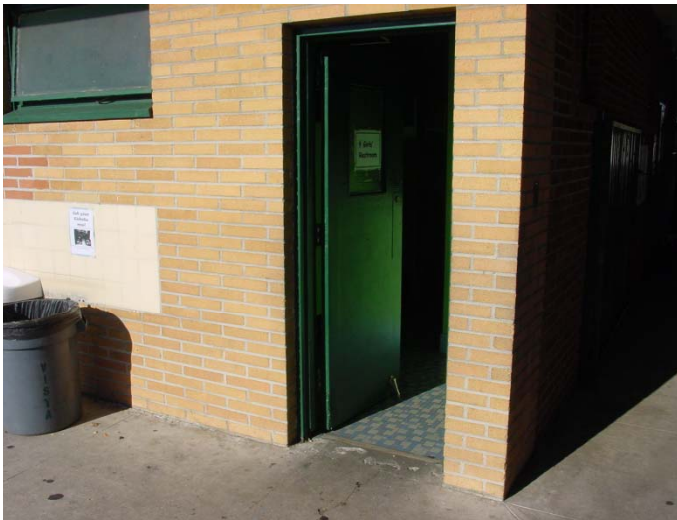
### **Drinking Fountains**

No compliant drinking fountains in the school



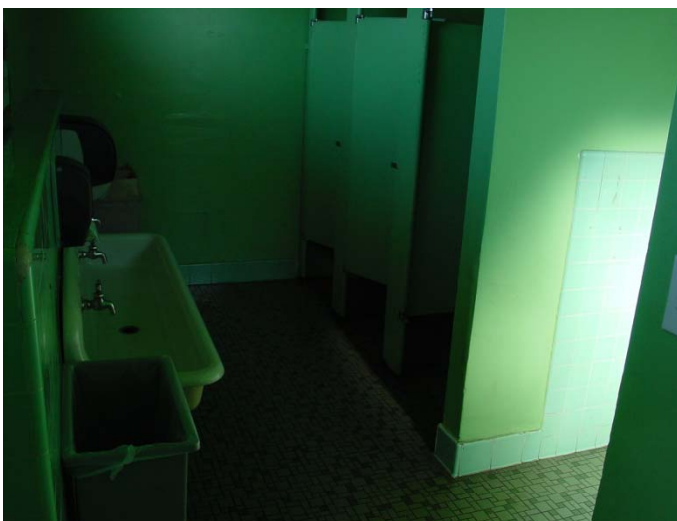
### Path of Travel

Non-accessible path of travel (some areas in the primary path of travel exceed 8%)



### Restroom

Door to girl's restroom too narrow  
No level landing  
Non-compliant door stop  
No signage



### Restroom

Door too narrow  
Non-accessible signage  
No accessible compartment



## Outdoor Dining

No accessible seating



## Path of Travel

No single gate

Non-compliant sliding gate

Rail for gate creates non-accessible path of travel



## Ramp

Non-compliant ramp

Handrail extensions do not return to parallel due to asphalt bult up