

**Accessibility Site Survey of Selected Items**  
**For**  
**Title 24 of the California Building Code**



**Milagro Charter Elementary School**  
1855 North Main Street  
Los Angeles, CA 90031

Certificate of Occupancy: 7-Change of Use

This report contains sample findings and is **NOT** intended to be a comprehensive site inspection and is **NOT** intended to be a complete report.

January 28, 2010



## Doors

No signage (typical condition for classroom doors)



## Path of Travel

Fire extinguisher is a protruding object on the path of travel



## Restroom

Only 19 inches in the direction of the door swing to lavatory



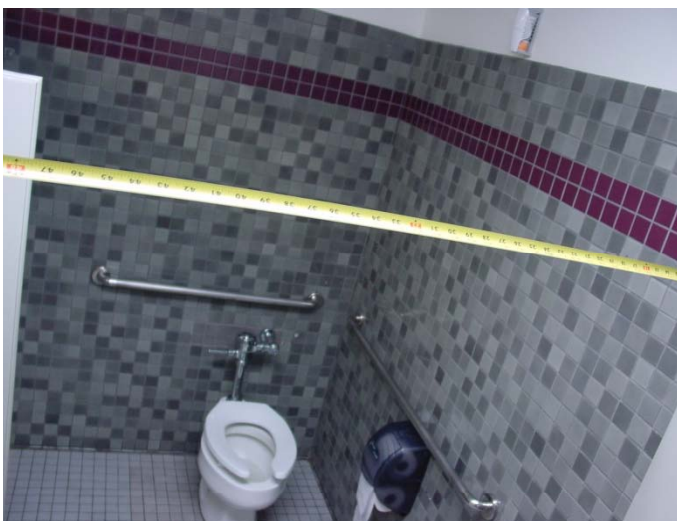
### Restroom

Pipes not wrapped  
Adult standards for elementary site



### Restroom

Non-compliant hardware on paper towel dispenser



### Restroom

Accessible compartment only 50 inches wide



### **Parking**

No truncated domes



### **Path of Travel**

Path of travel from the public right of way is not compliant

Bottom 10 inches of gate not smooth

Non-compliant controls on exterior of gate



### **Parking**

Van Access aisle only 92 inches



## Parking

International Symbol of Accessibility (ISA) is greater than 36 inches by 36 inches



## Parking

Accessible parking only 103 inches wide (108 required)



## Dining Area

No accessible tables



## Playground

Playground not accessible

Transfer point not on shortest accessible route



## Ramp

Security grating interferes with handrails